

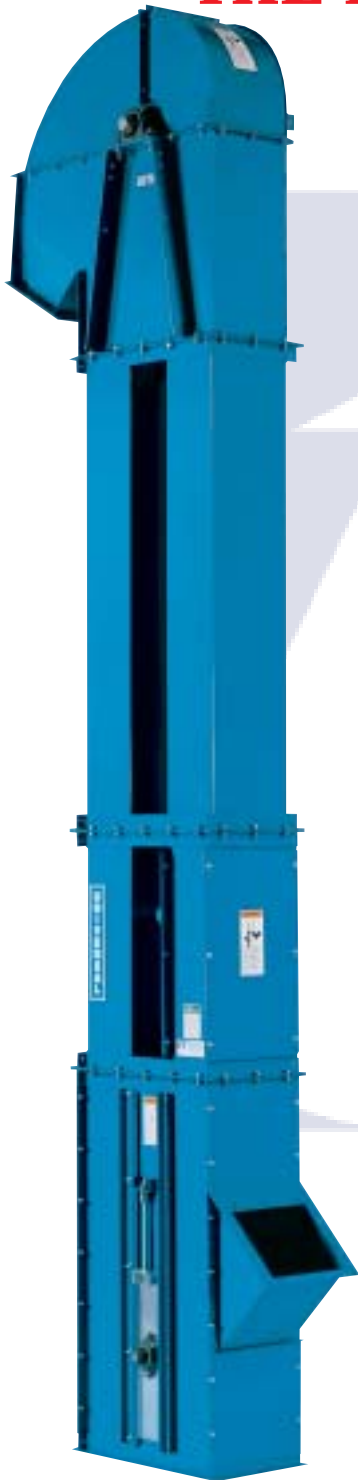


**D3**

**BUCKET  
ELEVATORS**

*up to 3,700 ft<sup>3</sup>/h  
(105 m<sup>3</sup>/h)  
/3,000 BPH*

**HIGHER VOLUME WITHOUT  
THE DAMAGING HIGHER  
SPEED -- GREAT  
FOR SEEDS**



**EXCLUSIVE “EASY DUMP™” DESIGN  
(D3-1000ED only)**

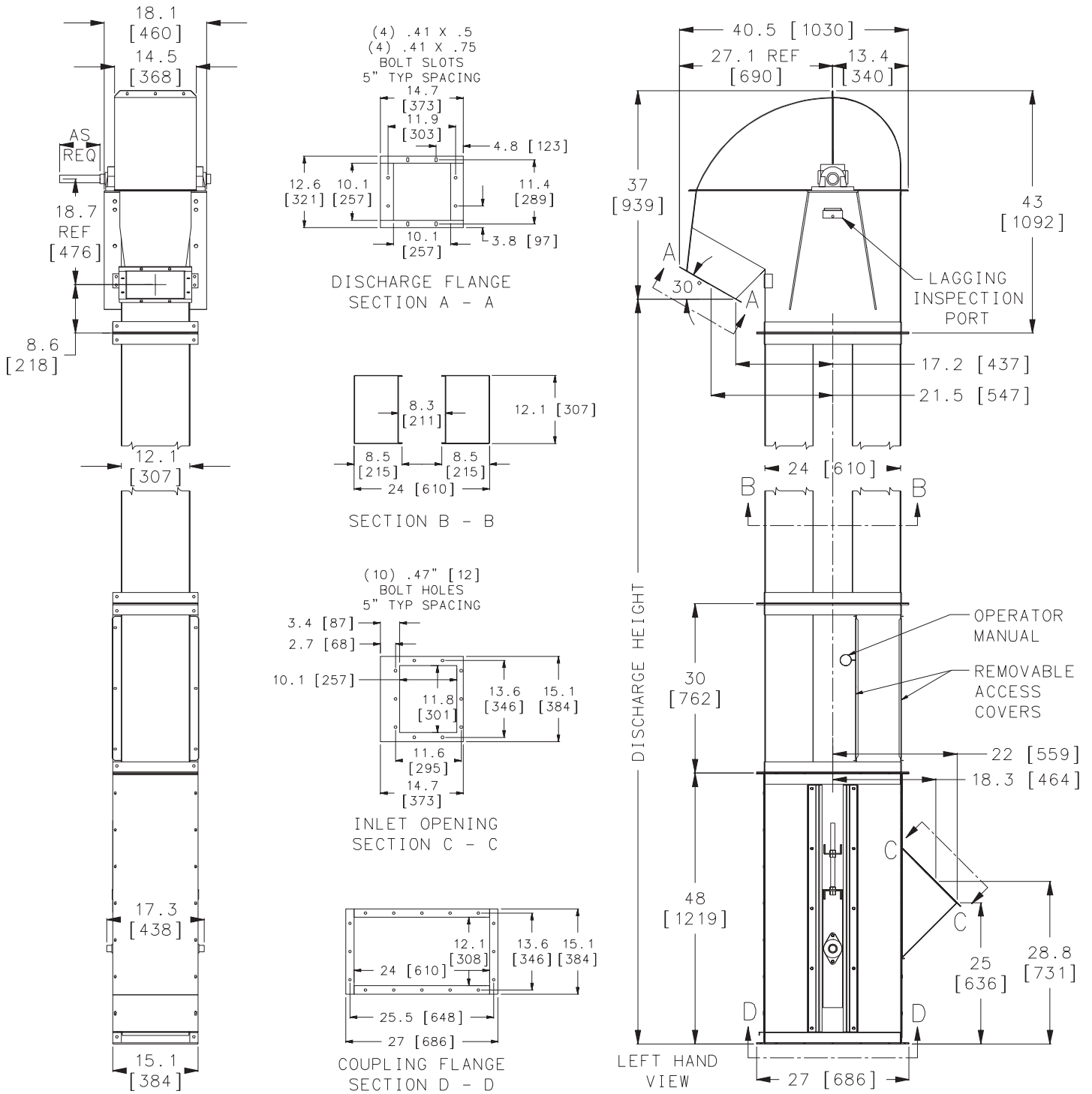
**SPECIFICATIONS**

Model	D3-1000ED	D3-2000	D3-3000
Capacity - Free Flowing Material @ 85% Bucket fill	1,000 BPH 1,250 ft <sup>3</sup> /h 35 m <sup>3</sup> /h	2,000 BPH 2,500 ft <sup>3</sup> /h 70 m <sup>3</sup> /h	3,000 BPH 3,700 ft <sup>3</sup> /h 105 m <sup>3</sup> /h
Short TPH @ 50 lbs/ft <sup>3</sup>	30	60	90
Short TPH @ 75 lbs/ft <sup>3</sup>	46	93	138
Belt Speed	145 FPM	285 FPM	390 FPM
Headshaft RPM	60 RPM	118 RPM	160 RPM
Bucket Spacing	6"	6"	6"
Head Casing	12 gauge		
Headshaft Dia.	1-11/16" diameter to 60', 1-15/16" diameter over 60'		
Headshaft Bearing	Ball Bearing Pillow Block, roller optional		
Head Pulley	9-1/4" diameter with vulcanized rubber lagging		
Buckets	9" x 5-1/2" plastic or 16 gauge steel		
Belting	10" wide PVC, rubber optional		
Legging	14 gauge twin box columns		
Boot Casing	12 gauge		
Bootshaft	1-3/16" diameter		
Bootshaft Bearing	1-3/16" Two bolt flange		
Boot Pulley	Slatted self cleaning style		
Construction	Carbon or galvanized steel		
Drive Package	Optional		
Motor	Optional		

**THE TRADITION OF  
EXCELLENCE CONTINUES!**

(Guards removed for photos only)

# MODEL D3



NOTE: Unit application, location and specifications determine the type, quantity and/or placement of electrical, electrical safety or other safety controls required. Whether these controls are supplied by Universal Industries or another supplier, all OSHA safety and health standards, the National Electrical Code and local codes must be met and followed. Because we constantly strive to provide the finest material handling equipment, establishing industry standards, specifications must remain subject to change without notice.

