

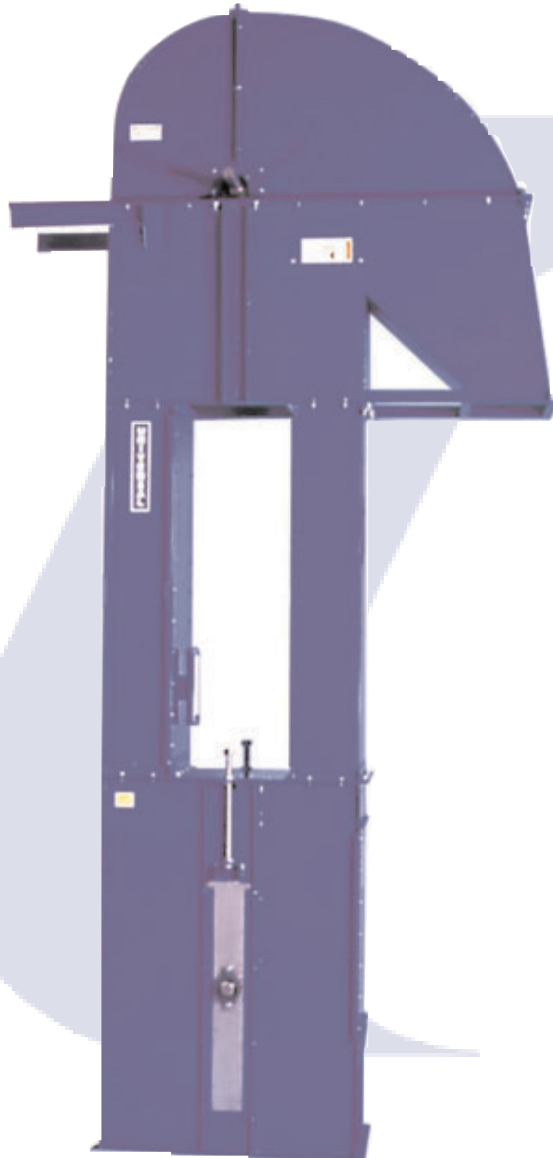


DR30

BUCKET ELEVATORS

up to 15,872 ft³/h
(449 m³/h)
/12,754 BPH

UNIVERSAL INDUSTRIES NEW LINE OF LARGE HEAD PULLEY BUCKET ELEVATORS



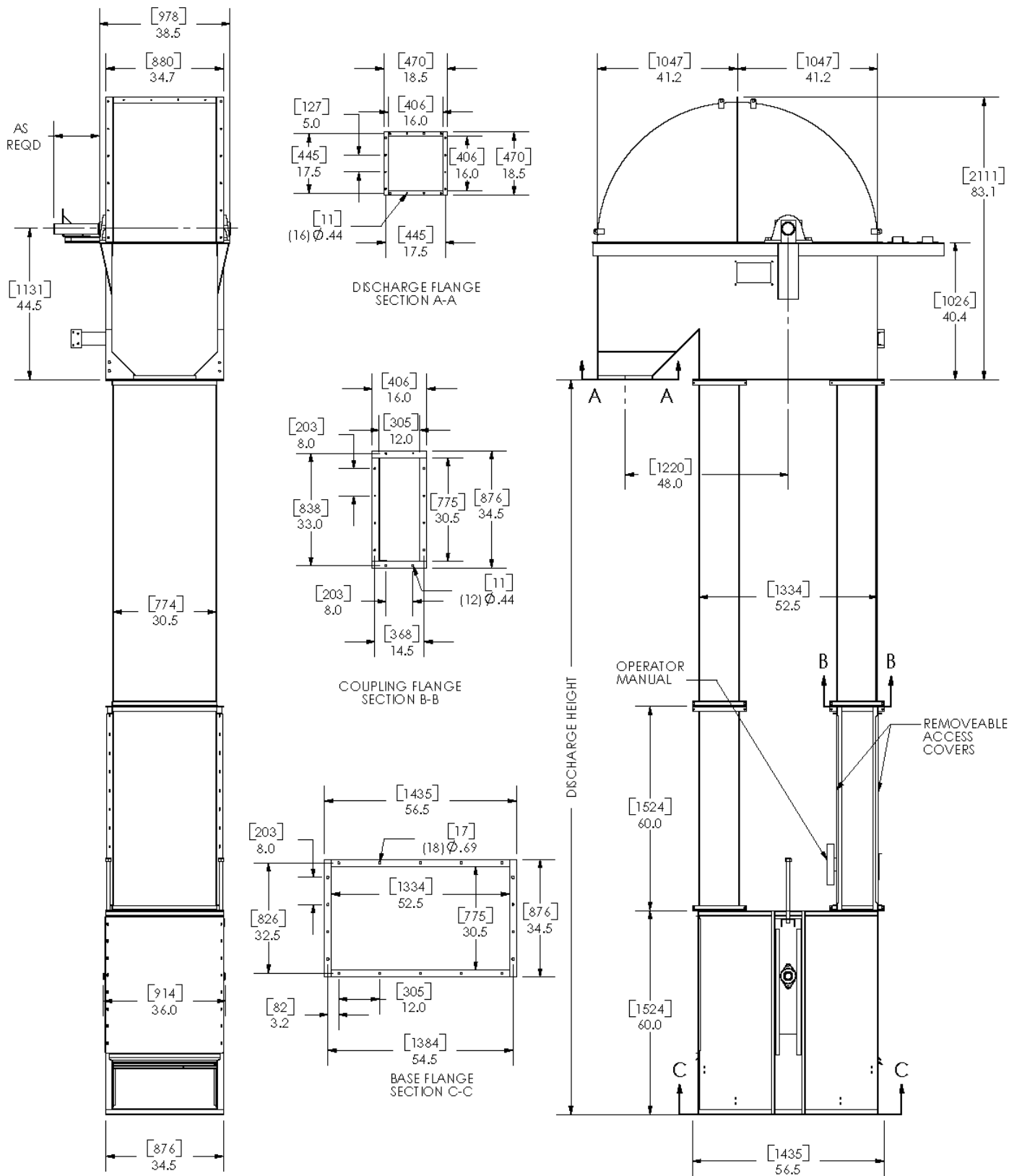
(Guards removed for photos only)
(Photo for reference only. DR20 unit shown)

SPECIFICATIONS

Model	DR30-6300	DR30-12700
Belt Speed FPM	275	555
Headshaft RPM	35 RPM	70 RPM
Capacity - Free	7,936 ft ³ /h	15,872 ft ³ /h
Flowing Material	6,377 bph	12,754 bph
@ 85% Bucket fill	225 m ³ /h	449 m ³ /h
Short TPH @ 50 lbs/ft ³	198.4	396.8
Short TPH @ 75 lbs/ft ³	297.6	595.2
Bucket Spacing	10" (25.4cm)	
Head Casing	7 gauge	
Headshaft Dia.	3 7/16" (8.7cm) diameter	
Headshaft Bearing	Ball Bearing, 2 bolt pillow block, roller optional	
Head Pulley	30" (76.2cm) x dia. crown face x 28" (71.7cm) wide w/ vulcanized rubber lagging	
Buckets	12" x 8" (30.5 x 20.3) HDPE 2 rows staggered	
Belting	26" (66cm) wide PVC	
Legging	12 ga. twin box columns	
Boot Casing	7 gauge	
Bootshaft	1-15/16" (4.93cm) diameter	
Bootshaft Bearing	Ball bearing 2 bolt flange	
Boot Pulley	30" dia x 28" slatted self cleaning style	
Construction	Carbon or galvanized steel	
Drive Package	Optional #2 Drive	
Motor	Optional	

THE TRADITION OF EXCELLENCE CONTINUES!

MODEL DR30



NOTE: Unit application, location and specifications determine the type, quantity and/or placement of electrical, electrical safety or other safety controls required. Whether these controls are supplied by Universal Industries or another supplier, all OSHA safety and health standards, the National Electrical Code and local codes must be met and followed. Because we constantly strive to provide the finest material handling equipment, establishing industry standards, specifications must remain subject to change without notice.

 **Universal Industries**
 5800 Nordic Drive • PO Box 308 • Cedar Falls, IA 50613-0308
 1-800-553-4446 • 319-277-7501 • FAX 319-277-2318
 www.universalindustries.com • sales@universalindustries.com