



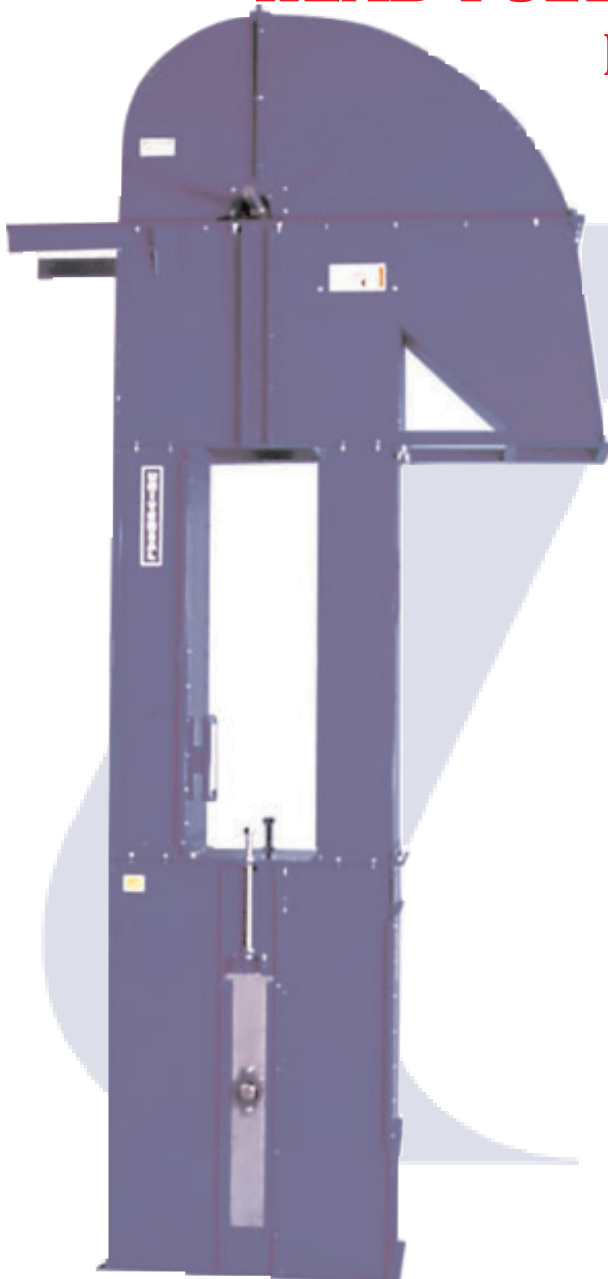
Universal Industries

**UNIVERSAL INDUSTRIES
NEW LINE OF LARGE
HEAD PULLEY BUCKET
ELEVATORS**

DR40

**BUCKET
ELEVATORS**

*up to 22,645 ft³/h
(641 m³/h)
/18,197 BPH*



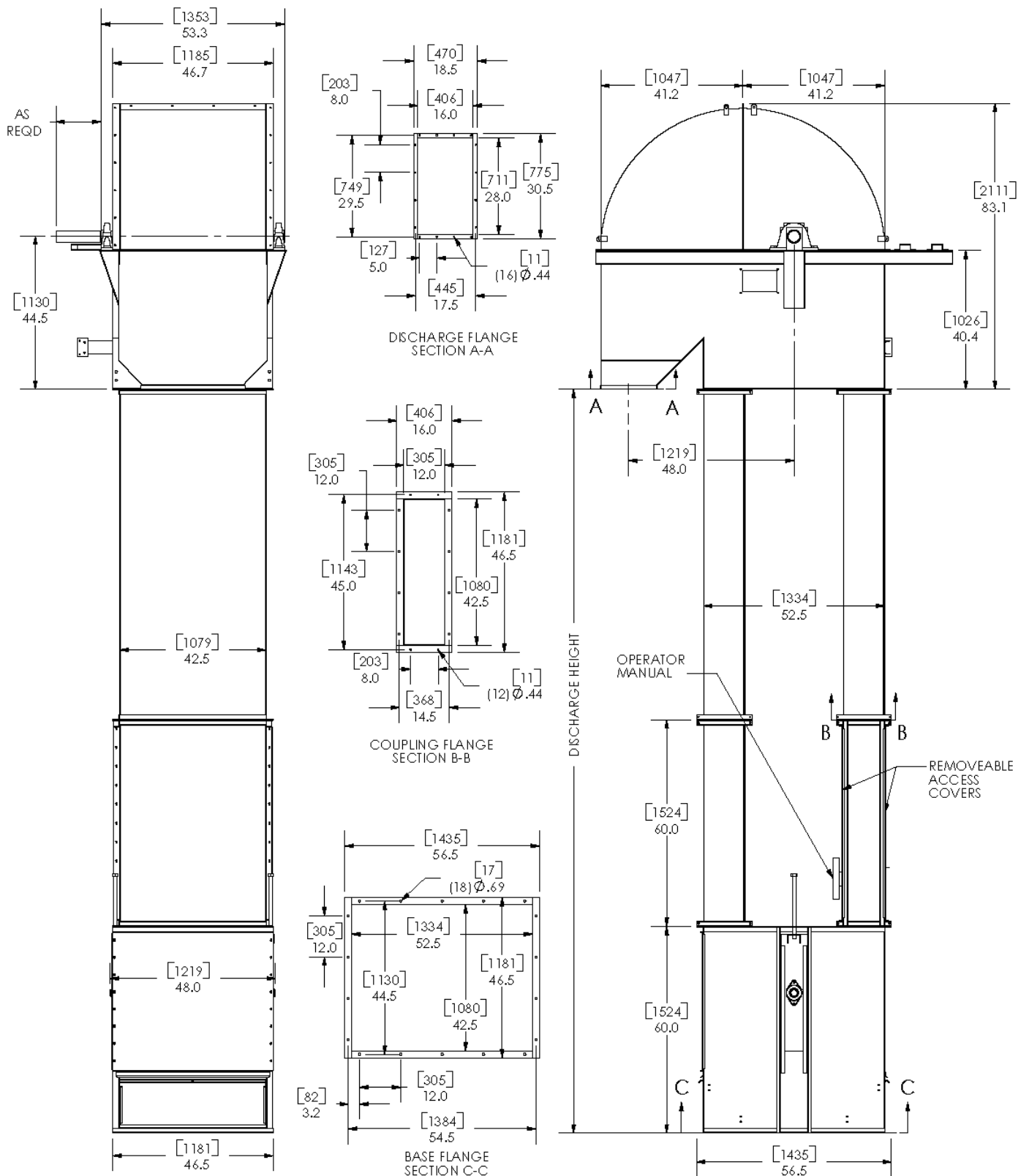
SPECIFICATIONS

Model	DR40-9000	DR40-18000
Belt Speed FPM	275	555
Headshaft RPM	35 RPM	70 RPM
Capacity - Free	11,323 ft ³ /h	22,645 ft ³ /h
Flowing Material	9,098 bph	18,197 bph
@ 85% Bucket fill	321 m ³ /h	641 m ³ /h
Short TPH @ 50 lbs/ft ³	283	566
Short TPH @ 75 lbs/ft ³	425	850
Bucket Spacing	10" (25.4cm)	
Head Casing	7 ga.	
Headshaft Dia.	3 15/16" (8.7cm) diameter	
Headshaft Bearing	Ball Bearing, 2 bolt pillow block, roller optional	
Head Pulley	30" (76.2cm) dia. crown face x 40" (101.6cm) wide w/ vulcanized rubber lagging	
Buckets	18" x 8" (45.7cm x 20.3cm) 2 rows staggered	
Belting	38" (96.52cm) wide PVC	
Legging	12 ga. twin box columns	
Boot Casing	7 gauge	
Bootshaft	1-15/16" (4.93cm) diameter	
Bootshaft Bearing	Ball bearing 2 bolt flange	
Boot Pulley	30" dia. x 40" slatted self cleaning style	
Construction	Carbon or galvanized steel	
Drive Package	Optional #2 Drive	
Motor	Optional	

**THE TRADITION OF
EXCELLENCE CONTINUES!**

(Guards removed for photos only)

MODEL DR40



NOTE: Unit application, location and specifications determine the type, quantity and/or placement of electrical, electrical safety or other safety controls required. Whether these controls are supplied by Universal Industries or another supplier, all OSHA safety and health standards, the National Electrical Code and local codes must be met and followed. Because we constantly strive to provide the finest material handling equipment, establishing industry standards, specifications must remain subject to change without notice.

