

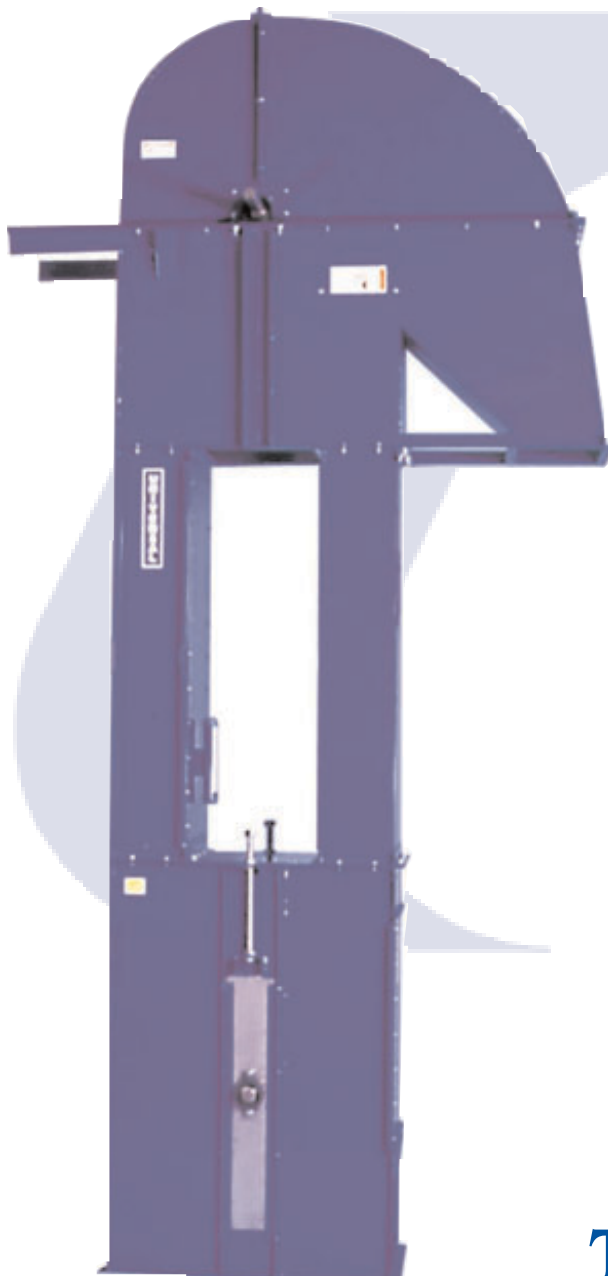


G150

BUCKET ELEVATORS

*up to 17,500 ft³/h
(498 m³/h)
/14,100 BPH*

**IDEAL UNIT FOR HANDLING
PEANUTS IN THE SHELL
AND OTHER
LIGHTWEIGHT MATERIALS**



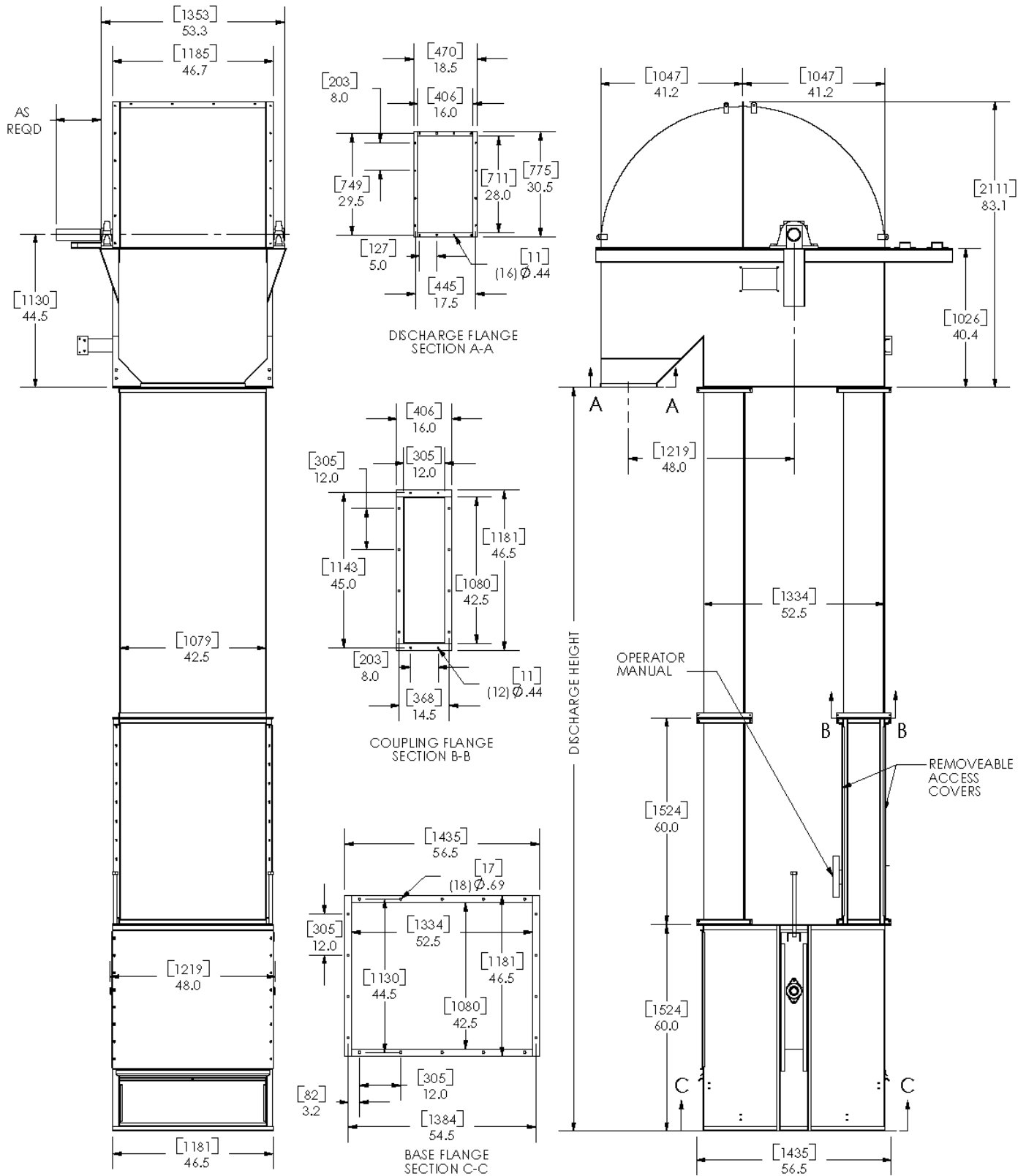
SPECIFICATIONS

Model	G150
Capacity - Free	17,500 ft ³ /h
Flowing Material	14,100 bph
@ 110 % Bucket fill	498 m ³ /h
Short TPH @ 15 lbs/ft ³	132 TPH
Short TPH @ 18 lbs/ft ³	158 TPH
Short TPH @ 22 lbs/ft ³	193 TPH
Belt Speed	335 FPM
Headshaft RPM	42 RPM
Bucket Spacing	10" (25.4cm)
Head Casing	7 gauge
Headshaft Dia.	3 15/16" (8.7cm) Diameter
Headshaft Bearing	Ball bearing, 2 bolt pillow block, roller optional
Head Pulley	30"(76.2cm) dia. crown face x 40" (101.6cm) wide w/ vulcanized rubber lagging
Buckets	18"(45.7cm) x 8"(20.3cm) HDPE 2 rows staggered
Belting	38"(96.52cm) wide PVC
Trunking	12 ga. twin box columns
Boot Casing	7gauge
Bootshaft	1 15/16" (4.93cm) Diameter
Bootshaft Bearing	Ball bearing 2 bolt flange
Boot Pulley	30"dia. x 40" slatted self cleaning style
Construction	Carbon, galvanized or 304 stainless steel
Drive Package	Optional #2 Drive
Motor	Optional

**THE TRADITION OF
EXCELLENCE CONTINUES!**

(Guards removed for photos only)

MODEL G150



NOTE: Unit application, location and specifications determine the type, quantity and/or placement of electrical, electrical safety or other safety controls required. Whether these controls are supplied by Universal Industries or another supplier, all OSHA safety and health standards, the National Electrical Code and local codes must be met and followed. Because we constantly strive to provide the finest material handling equipment, establishing industry standards, specifications must remain subject to change without notice.

