



Universal Industries

P1000

BUCKET ELEVATORS

up to 1,067 ft³/h
(29.88 m³/h)
/857 BPH

**MAXIMUM CLEANINESS
DURING OPERATION FOR
MIMIMUM OPERATOR
CLEANUP**



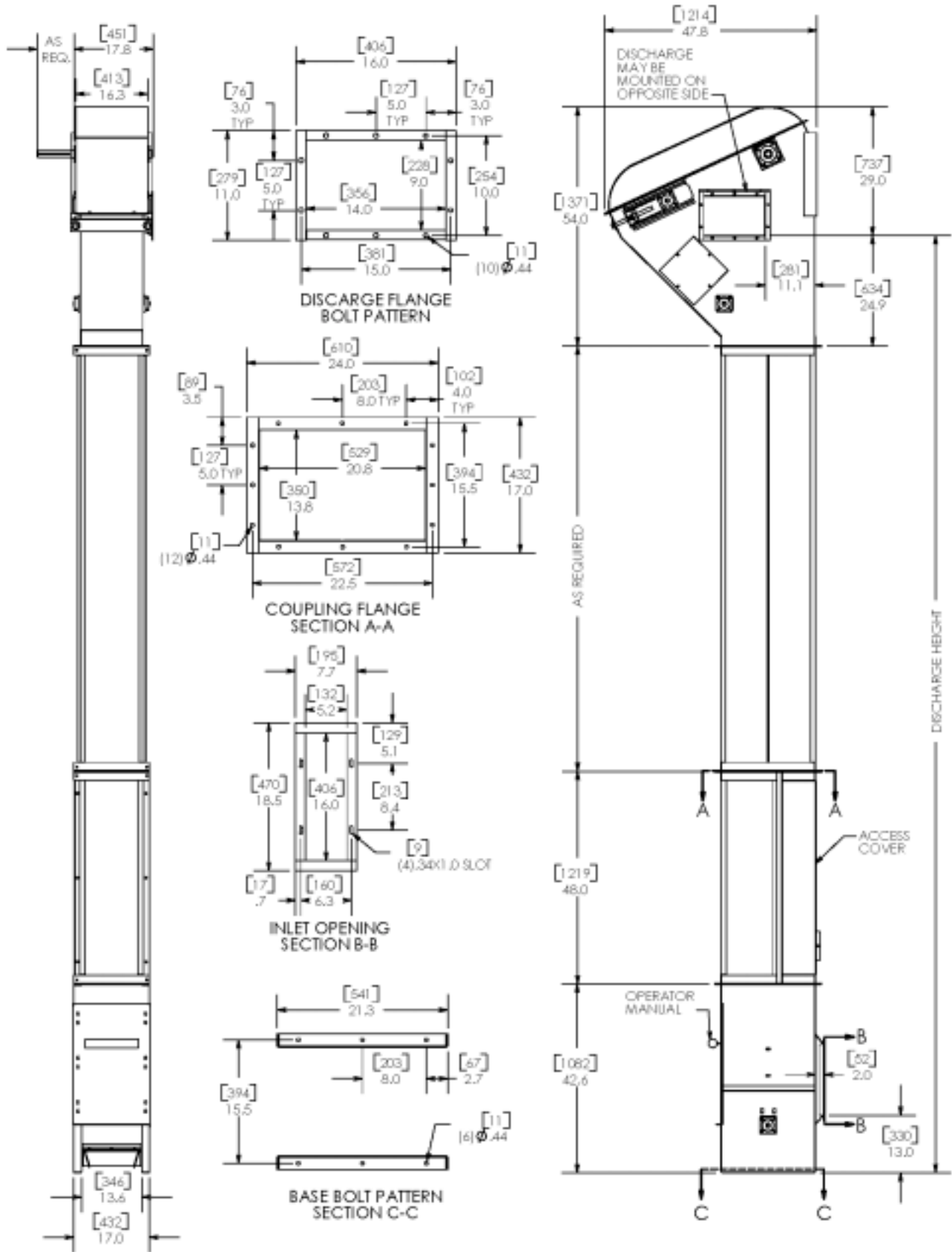
(Guards removed for photos only)

SPECIFICATIONS

Model	P1000-60	P1000-90
Capacity - Free Flowing Material @ 85% Bucket fill	568 BPH 708 ft ³ /h 20.1 m ³ /h	857 BPH 1,067 ft ³ /h 30 m ³ /h
Short TPH @ 50lbs/ft ³	17.7 TPH	26.7 TPH
Short TPH @ 75lbs/ft ³	26.6 TPH	40 TPH
Chain Speed	60 FPM	90 FPM
Headshaft RPM	23.6 RPM	35.6 RPM
Bucket Spacing	6"	6"
Head Casing	11 gauge	
Headshaft Dia.	Determined by discharge height - Consult factory	
Headshaft Bearing	Ball bearing, four bolt flange	
Buckets	8" x 6" HDPE	
Chain	C2060H	
Trunking	14 gauge single trunk	
Boot Casing	11 gauge	
Bootshaft	1" diameter	
Bootshaft Bearing	Ball bearing, four bolt flange	
Construction	Carbon steel (Consult factory for other options)	
Drive Package	Optional	
Motor	Optional	

**THE TRADITION OF
EXCELLENCE CONTINUES!**

MODEL P1000



NOTE: Unit application, location and specifications determine the type, quantity and/or placement of electrical, electrical safety or other safety controls required. Whether these controls are supplied by Universal Industries or another supplier, all OSHA safety and health standards, the National Electrical Code and local codes must be met and followed. Because we constantly strive to provide the finest material handling equipment, establishing industry standards, specifications must remain subject to change without notice.



5800 Nordic Drive • PO Box 308 • Cedar Falls, IA 50613-0308
1-800-553-4446 • 319-277-7501 • FAX 319-277-2318