



**TRI
ROLL**

CONVEYORS

*up to 31,800 CFH
@ 500 FPM*

**ECONOMICAL, RUGGED,
LOW PROFILE CONVEYOR
EASILY FITS IN PEAKS OF
WAREHOUSES TO FILL YOUR
MATERIAL HANDLING NEEDS**

**3 ROLL IDLERS IDEAL
FOR HEAVIER APPLICATIONS**

**OPTIONAL CATWALK ON RIGHT,
LEFT OR BOTH SIDES**



(Guards removed for photos only)

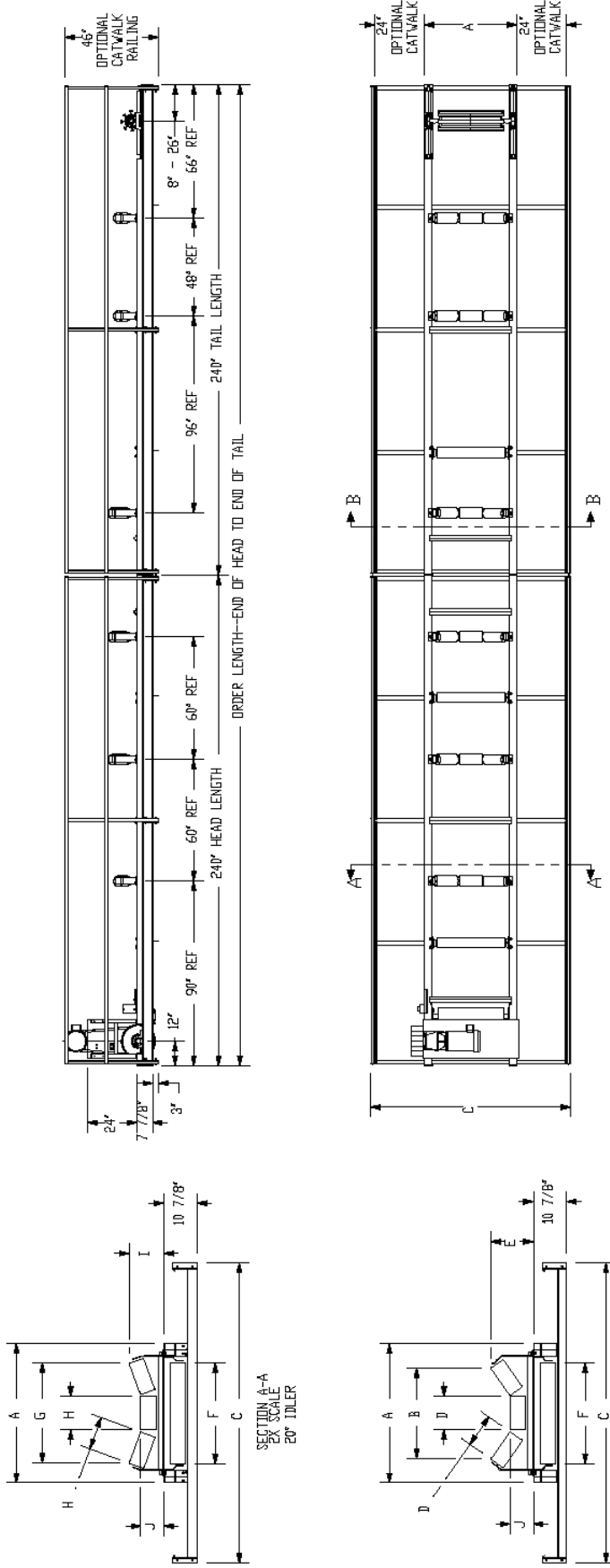
SPECIFICATIONS

| Model | TRI 18 | TRI 24 | TRI 30 | TRI 36 |
|--------------------|--|---|---|---|
| Belt Width | 18" | 24" | 30" | 36" |
| Capacity @ 500 FPM | 6,000 f ³ /h 170 m ³ /h | 13,200 f ³ /h 374 m ³ /h | 21,600 f ³ /h 612 m ³ /h | 31,800 f ³ /h 900 m ³ /h |
| Belt Speeds | 100-500 FPM | | | |
| Bearings, Head | 2 7/16" Type - E | | | |
| Head Pulley | 16" dia. with 3/8" herringbone lagging | | | |
| Headshaft | 2 7/16" | | | |
| Tail Pulley | 10" diameter wing | | | |
| Bearings | 1 15/16" | | | |
| Idlers | 4" or 5" dia. 35° CEMA-B | | | |
| Frame Construction | 8" x 10" wide flange beam | | | |
| Span Length | 20 foot sections | | | |

SPECIFICATIONS ARE SUBJECT TO CHANGE WITHOUT NOTICE

**THE TRADITION
OF
EXCELLENCE
CONTINUES!**

TRI ROLL CONVEYOR



| 4" DIAMETER IDLER CAN | | | | | | | | | | | |
|-----------------------|-----------|-------|-------|--------|-------|-------|-------|-------|-------|-------|------|
| MODEL | DIMENSION | A | B | C | D | E | F | G | H | I | J |
| TRI-ROLL 18 | INCHES | 33.38 | 18.31 | 86.00 | 6.50 | 10.88 | 21.00 | 20.06 | 6.50 | 9.31 | 7.00 |
| TRI-ROLL 24 | INCHES | 39.38 | 24.25 | 92.00 | 8.69 | 12.19 | 27.00 | 26.56 | 8.69 | 10.13 | 7.00 |
| TRI-ROLL 30 | INCHES | 45.38 | 30.31 | 98.00 | 10.88 | 13.50 | 33.00 | 33.00 | 10.88 | 10.88 | 7.00 |
| TRI-ROLL 36 | INCHES | 51.38 | 36.25 | 104.00 | 13.25 | 14.81 | 39.00 | 39.63 | 13.25 | 11.63 | 7.00 |

| 5" DIAMETER IDLER CAN | | | | | | | | | | | |
|-----------------------|-----------|-------|-------|--------|-------|-------|-------|-------|-------|-------|------|
| MODEL | DIMENSION | A | B | C | D | E | F | G | H | I | J |
| TRI-ROLL 18 | INCHES | 33.38 | 17.75 | 86.00 | 6.50 | 11.31 | 21.00 | 19.75 | 6.50 | 9.81 | 7.50 |
| TRI-ROLL 24 | INCHES | 39.38 | 23.69 | 92.00 | 8.69 | 12.63 | 27.00 | 26.19 | 8.69 | 10.56 | 7.50 |
| TRI-ROLL 30 | INCHES | 45.38 | 29.63 | 98.00 | 10.88 | 13.88 | 33.00 | 32.63 | 11.31 | 11.31 | 7.50 |
| TRI-ROLL 36 | INCHES | 51.38 | 35.69 | 104.00 | 13.25 | 15.19 | 39.00 | 39.31 | 13.25 | 12.13 | 7.50 |

NOTE: Unit application, location and specifications determine the type, quantity and/or placement of electrical, electrical safety or other safety controls required. Whether these controls are supplied by Universal Industries or another supplier, all OSHA safety and health standards, the National Electrical Code and local codes must be met and followed. Because we constantly strive to provide the finest material handling equipment, establishing industry standards, specifications must remain subject to change without notice.

