

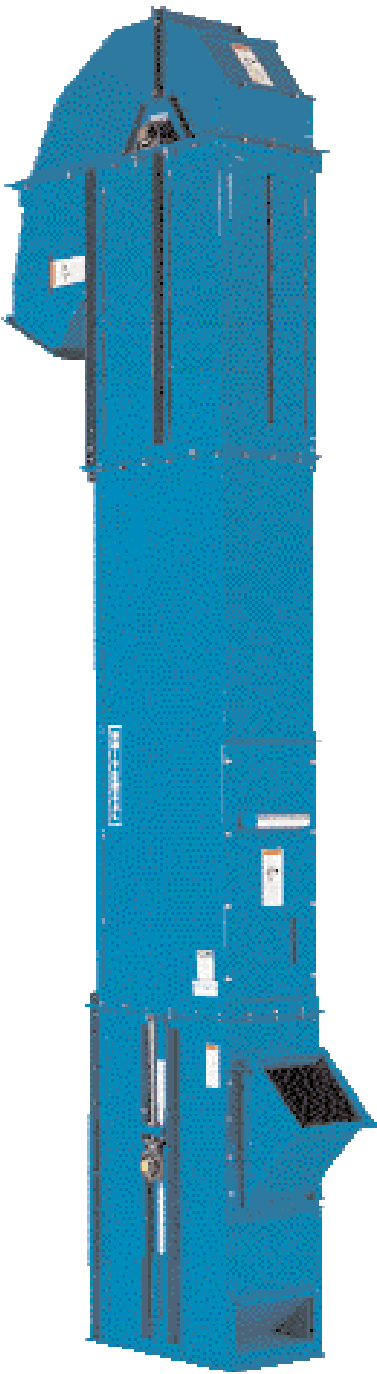


U3

BUCKET  
ELEVATORS

*up to 5,625 CFH  
(159 CMH)  
/210 TPH*

FOR HOSTILE MATERIALS -  
HOT, CORROSIVE, HEAVY,  
ABRASIVE, HYGROSCOPIC,  
WET, LUMPY\*



EXCLUSIVE “EASY DUMP™” DESIGN  
(U3-1600ED only)

SPECIFICATIONS

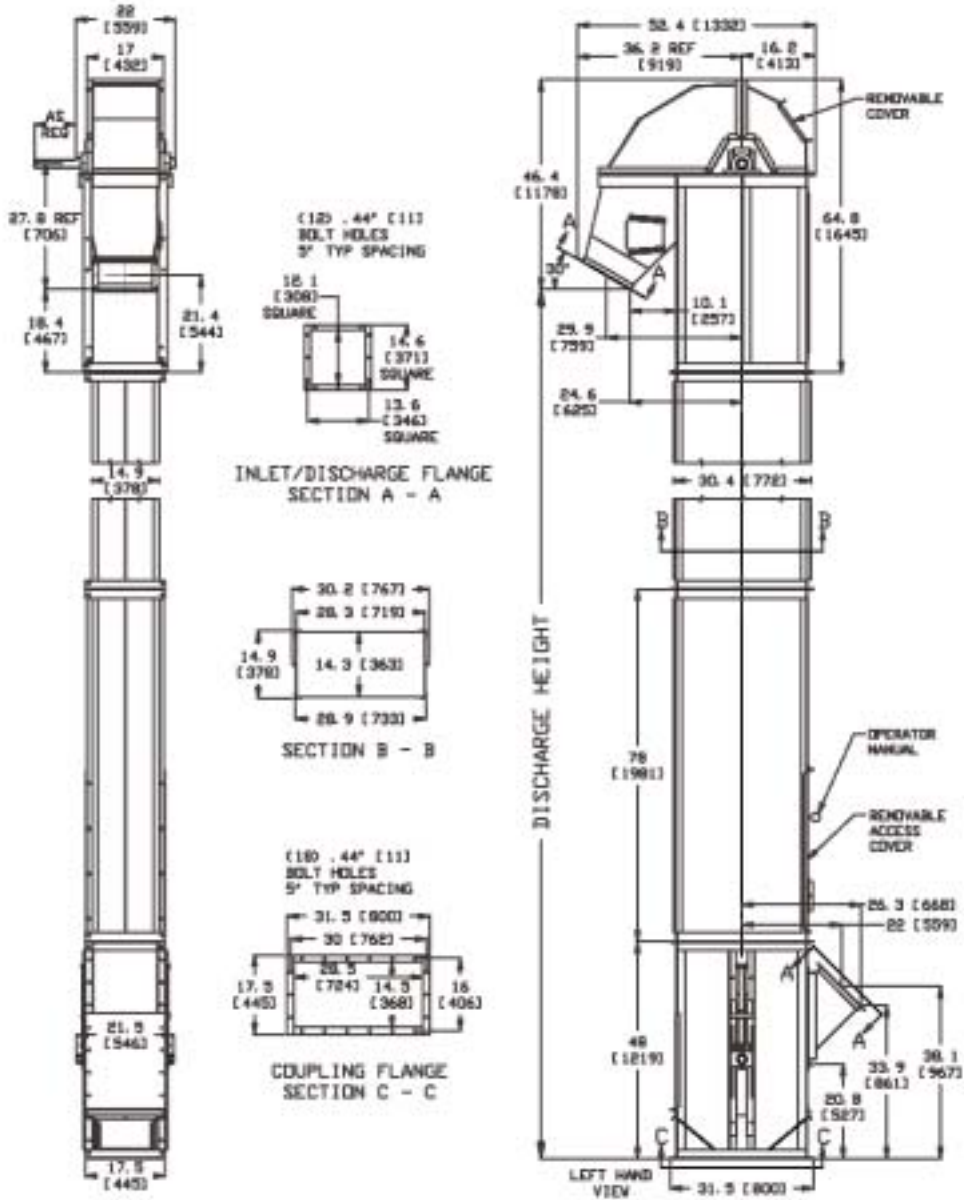
Model	U3-1600ED	U3-4300	U3-5600
Capacity - Free Flowing Material @ 85% Bucket fill	1,625 ft <sup>3</sup> /h 46 m <sup>3</sup> /h	4,375 ft <sup>3</sup> /h 124 m <sup>3</sup> /h	5,625 ft <sup>3</sup> /h 159 m <sup>3</sup> /h
Short TPH @ 50 lbs. ft <sup>3</sup>	40 TPH	109 TPH	140 TPH
Short TPH @ 75 lbs. ft <sup>3</sup>	60 TPH	164 TPH	210 TPH
Belt Speed	177 FPM	380 FPM	500 FPM
Headshaft RPM	55 RPM	118 RPM	155 RPM
Bucket Spacing	6"	6"	6"
Head Casing	12 gauge with angle iron frame and 7 ga. rim		
Headshaft Dia.	1 15/16" to 40', 2 7/16 over 40', 2 15/16 optional		
Headshaft Bearing	Ball bearing pillow block, roller optional		
Head Pulley	12" diameter crown face with vulcanized rubber lagging		
Buckets	11" x 5 1/2" plastic or 16 gauge steel		
Belting	12" wide PVC, rubber optional		
Legging	12 gauge single leg with angle iron corners		
Boot Casing	7 gauge		
Bootshaft	1 11/16" diameter		
Bootshaft Bearing	Ball bearing take up unit		
Boot Pulley	12" dia. x 12" wide wing type		
Construction	Carbon or 304 stainless steel		
Drive Package	Optional		
Motor	Optional		

\*Maximum lump size, 2.50"

THE TRADITION OF  
EXCELLENCE CONTINUES!

(Guards removed for photos only)

# MODEL U3



NOTE: Unit application, location and specifications determine the type, quantity and/or placement of electrical, electrical safety or other safety controls required. Whether these controls are supplied by Universal Industries or another supplier, all OSHA safety and health standards, the National Electrical Code and local codes must be met and followed. Because we constantly strive to provide the finest material handling equipment, establishing industry standards, specifications must remain subject to change without notice.

