



**U6**

**BUCKET  
ELEVATORS**

**FOR PROCESSING,  
DIFFICULT, HOSTILE  
MATERIALS**

*up to 7,500 CFH  
(212 CMH)*

**EASILY HANDLES HOT, ABRASIVE, HEAVY,  
CORROSIVE AND HYGROSCOPIC  
ELEMENTS...EVEN WET, LUMPY MATERIALS  
THAT TEND TO PACK AND BUILD UP  
EXCLUSIVE "EASY DUMP™" DESIGN**

**(U6-2500ED only)**

**SPECIFICATIONS**

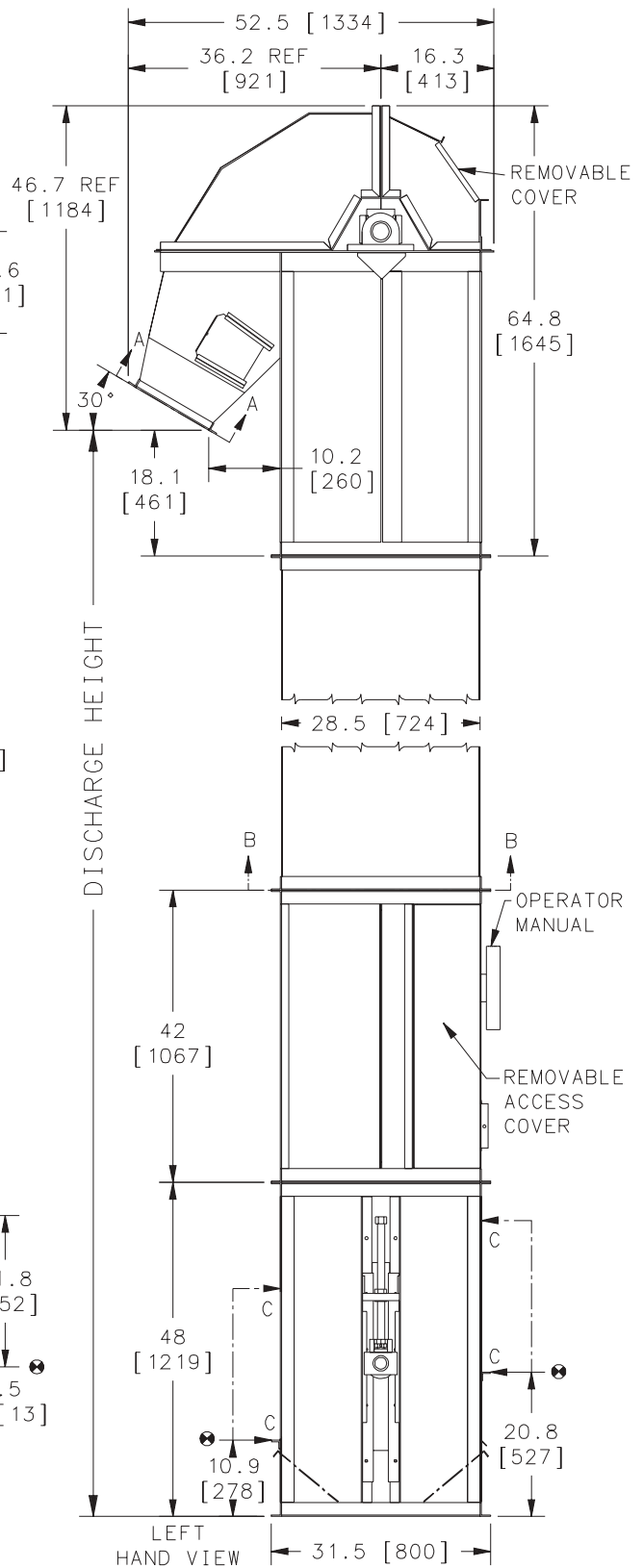
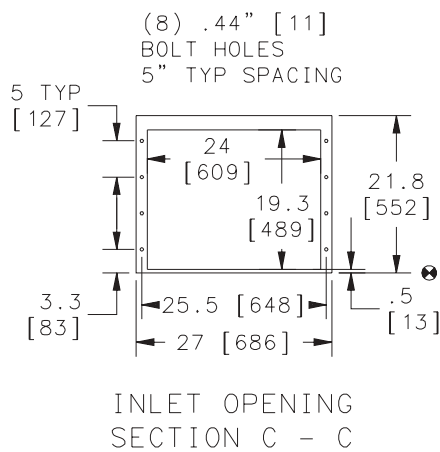
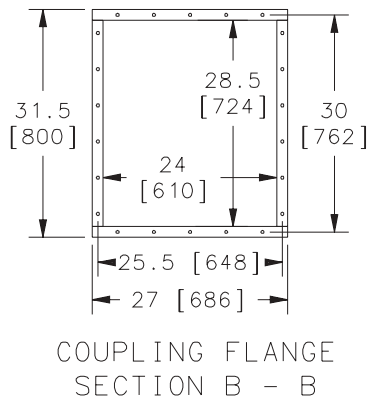
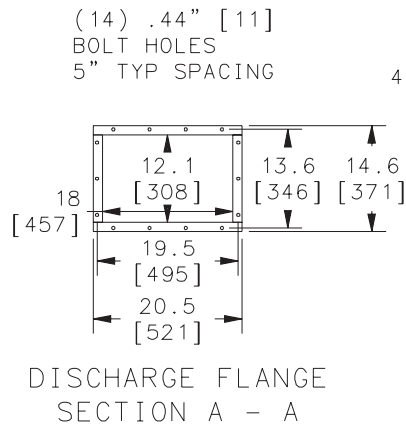
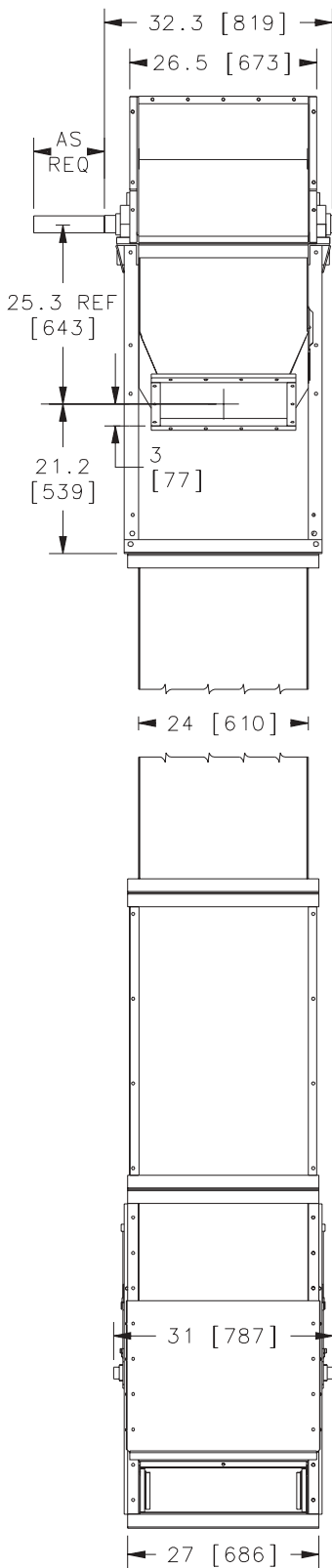


Model	U6-2500ED	U6-5000	U6-7500
Capacity - Free Flowing Material @ 85% Bucket fill	2,500 CFH 71 CMH	5,000 CFH 141 CMH	7,500 CFH 212 CMH
Short TPH @ 50lbs. ft <sup>3</sup>	62	125	187
Short TPH @ 75lbs. ft <sup>3</sup>	92	187	280
Belt Speed	140 FPM	290 FPM	400 FPM
Headshaft RPM	45 RPM	90 RPM	125 RPM
Bucket Spacing	6"	6"	6"
Head Casing	10 ga sides with 7 ga on wear surfaces		
Headshaft Dia.	2 7/16" dia. to 100'		
Headshaft Bearing	Ball Bearing Pillow Block, optional roller		
Head Pulley	12 3/8" dia. x 22" wide, vulcanized rubber lagging, Q D hub		
Buckets	9"x 5 1/2" plastic or steel, 2 rows or 18"x 5 1/2" steel, 20"x 5 1/2" plastic optional		
Belting	21" wide PVC, optional rubber		
Legging	10 ga single leg with angle iron corners		
Boot Casing	7 ga steel		
Bootshaft	1 15/16" turned to 1 11/16"		
Bootshaft Bearing	Ball Bearing Take-up Unit		
Boot Pulley	12" dia. x 21" wide wing type		
Construction	Carbon steel or stainless steel		
Drive Package	Optional		
Motor	Optional		

**THE TRADITION OF  
EXCELLENCE CONTINUES!**

(Guards removed for photos only)

# MODEL U6



NOTE: Unit application, location and specifications determine the type, quantity and/or placement of electrical, electrical safety or other safety controls required. Whether these controls are supplied by Universal Industries or another supplier, all OSHA safety and health standards, the National Electrical Code and local codes must be met and followed. Because we constantly strive to provide the finest material handling equipment, establishing industry standards, specifications must remain subject to change without notice.



Division of Universal International, Inc.  
5800 Nordic Drive • PO Box 308 • Cedar Falls, IA 50613-0308  
1-800-553-4446 • 319-277-7501 • FAX 319-277-2318