

SLIDER BED BELT CONVEYORS



UNIVEY® CLEATED TROUGH CONVEYOR

FOR APPLICATIONS THAT REQUIRE AN INCLINE, THE CLEATED TROUGH CONVEYOR CAN ASCENT UP TO 40° WHILE MOVING PRODUCT EFFORTLESSLY.

Slider Bed Belt Conveyors are ideal for handling products that require gentle handling, such as seed or other bulk materials, food products, or chemicals/powders. Our wide variety of Slider Bed Conveyors reach a broad range of capacities and have various characteristics that make each conveyor's design uniquely perfect for handling specific bulk products.

Offered with industrial strength lining options that make them an ideal solution for shorter spans when space is a concern. The heavier construction and various options and accessories allow the Slider Bed Conveyors to handle harsher materials with ease.

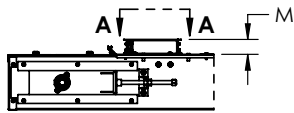
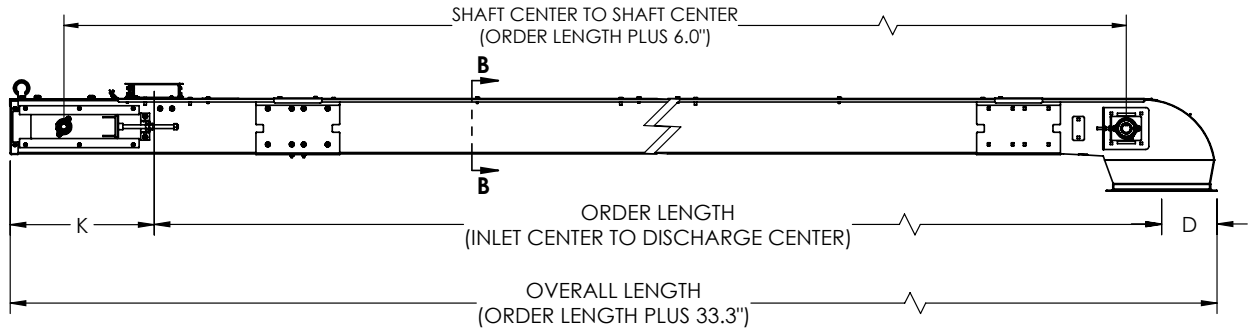
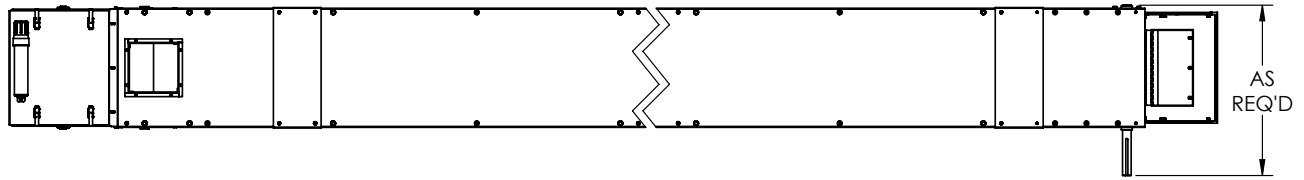


Model	CTC 16	CTC 20	CTC 24
Capacity 20° @ 271 FPM	2,350 FT ³ /H (66.54 m ³ /h)	3,250 FT ³ /H (92.03 m ³ /h)	4,150 FT ³ /H (117.51 m ³ /h)
Capacity 35° @ 271 FPM	1,400 FT ³ /H (39.64 m ³ /h)	1,950 FT ³ /H (55.22 m ³ /h)	2,450 FT ³ /H (69.38 m ³ /h)
Belt Width	16" (406.4mm)	20" (508mm)	24" (609.6mm)
Length (Minimum)	5' (1.5m) Inlet Center to Discharge Center		
Length (Maximum)	Consult Factory		
Belt Speeds	50 - 275 FPM (0.25 - 1.40 m/s)		
Head Shaft Bearings	Sealed Two Bolt Flange Ball Bearing		
Head Pulley	4-1/2" (114.3mm) Dia. w/ Vulcanized Rubber Lagging		
Tail Shaft Bearings	Sealed Two Bolt Flange Ball Bearing		
Tail Pulley	4" (101.6mm) Dia. Crowned Drum Pulley		
Belt Take-up	9" (228.6mm)		
Depth of Conveyor	9-1/4" (234.95mm)		
Depth of Trough	1-1/2" (38.1mm)		
Trough	14 Ga.		
Frame Construction	Galvanized or Stainless Steel		
Drive (Optional)	Shaft Mounted Reducer		

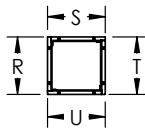
WHAT THE INDUSTRY IS BUILT AROUND

800.553.4446 | WWW.UNIVERSALINDUSTRIES.COM

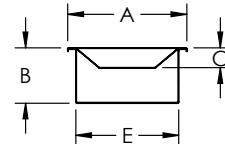
SLIDER BED BELT CONVEYORS | UNIVEY® CTC CONVEYOR



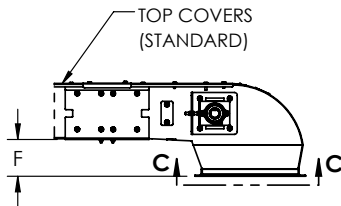
INLET HOPPER
(STANDARD)



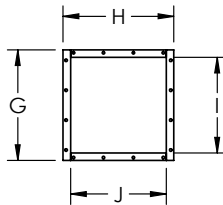
SECTION A-A
(INLET FLANGE)



SECTION B-B
(TROUGH SECTION VIEW)



90° DISCHARGE HOUSING
(STANDARD)



SECTION C-C
(DISCHARGE FLANGE)

MODEL	DIM	A	B	C	D	E	F	G	H	I	J	K	M	R	S	T	U
CTC 16	in	19.9	9.3	3.3	9.3	15.5	6.1	18.5	18.5	16	16	24	2.5	9.6	9.6	8.1	8.1
	mm	505	236	84	236	394	155	470	470	406	406	610	64	244	244	206	206
CTC 20	in	23.9	9.3	3.3	9.3	19.5	6.1	18.5	18.5	16	16	24	2.5	12.6	12.6	10.1	10.1
	mm	607	236	84	236	495	155	470	470	406	406	610	64	320	321	257	257
CTC 24	in	27.9	9.3	3.3	9.3	23.5	8.1	18.5	18.5	16	16	24	2.5	12.6	12.6	10.1	10.1
	mm	709	236	84	236	597	206	470	470	406	406	610	64	320	321	257	257



NOTE: Unit application, location and specifications determine the type, quantity and/or placement of electrical, electrical safety or other safety controls required. Whether these controls are supplied by Universal Industries or another supplier, all OSHA safety and health standards, the National Electrical Code and local codes must be met and followed. Because we constantly strive to provide the finest material handling equipment, establishing industry standards, specifications must remain subject to change without notice.