

CONTINUOUS CUP ELEVATORS



DAKOSA® 900 SERIES

The DAKOSA® Continuous Cup Elevators are the most gentle elevator configuration offered.

Built to the highest standards demanded of all Universal Industries products, the innovative design allows for virtually zero product damage and is available in several different configurations including: C, Z, Double Z, Flat, or Incline.

Bolt-on intermediate discharges and modular design allows for easy installation, system reconfiguration, and expansion.



Model	912	918	924
Capacity - Free Flowing Material @ 75% Waterline Bucket Fill	500 BPH 625 ft ³ /hr 17.7 m ³ /hr	740 BPH 920 ft ³ /hr 26.0 m ³ /hr	975 BPH 1215 ft ³ /hr 34.4 m ³ /hr
Short TPH @ 50 lbs/Ft. ³	15.6	23	30.4
MTPH @ 50 lbs/Ft. ³	14.2	20.9	27.6
Short TPH @ 75 lbs/Ft. ³	23.4	34.5	45.6
MTPH @ 75 lbs/Ft. ³	21.3	31.3	41.3
Buckets (Standard or Divided)	9" x 12" (228.6mm x 304.8mm)	9" x 18" (228.6mm x 457mm)	9" x 24" (228.6mm x 609.6mm)
Chain Speed FPM	70		
Head Shaft RPM	18.66		
Chain	C 2062 Nickel Plated - Self Lubing		
Construction	Carbon Steel Tubular Frame (Stainless Steel Optional)		
Configuration Options	Available in C, Z, Double Z, Flat, or Incline Configurations		
Drive Package	Optional Right Angle Helical Bevel - High Efficiency Drive Available		
Motor	Nema Frame C-Face Inverter Ready		

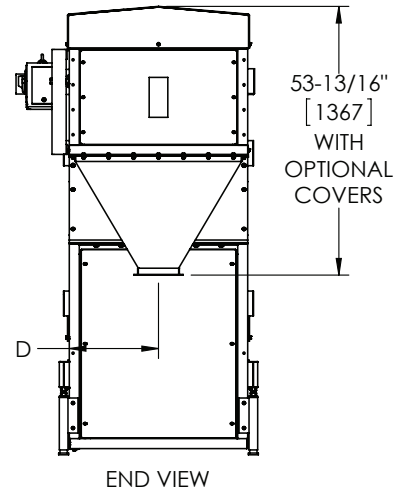
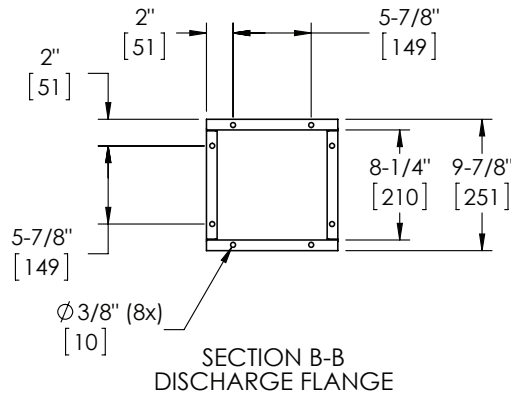
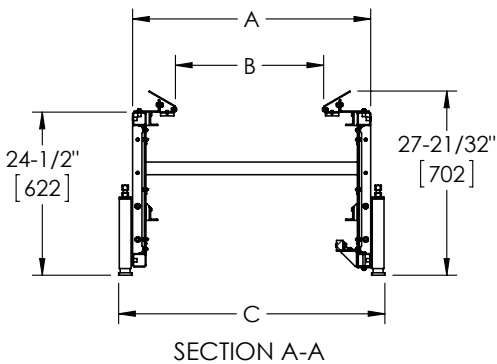
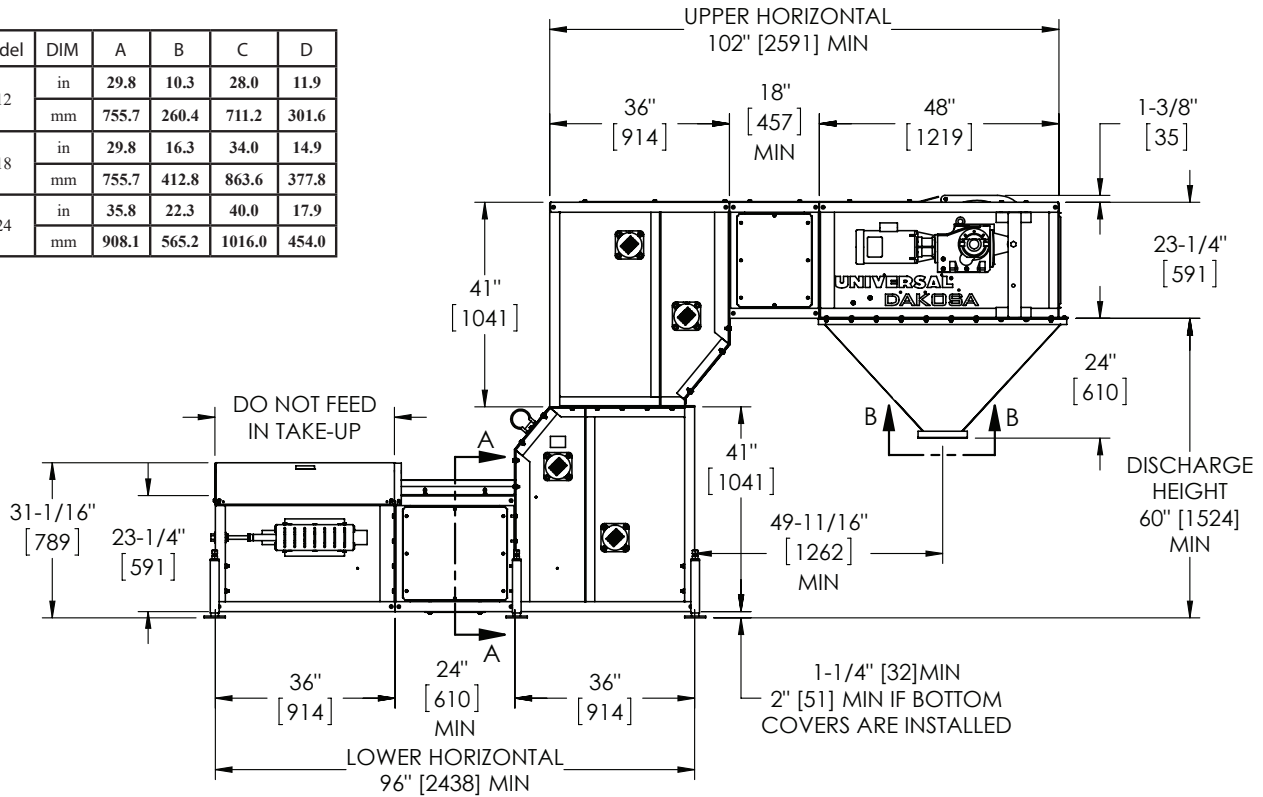
*Product delivery rate must be uniform and fed evenly across the width of the buckets.

WHAT THE INDUSTRY IS BUILT AROUND

800.553.4446 | WWW.UNIVERSALINDUSTRIES.COM

CONTINUOUS CUP ELEVATORS | DAKOSA® 900 SERIES

Model	DIM	A	B	C	D
912	in	29.8	10.3	28.0	11.9
	mm	755.7	260.4	711.2	301.6
918	in	29.8	16.3	34.0	14.9
	mm	755.7	412.8	863.6	377.8
924	in	35.8	22.3	40.0	17.9
	mm	908.1	565.2	1016.0	454.0



NOTE: Unit application, location and specifications determine the type, quantity and/or placement of electrical, electrical safety or other safety controls required. Whether these controls are supplied by Universal Industries or another supplier, all OSHA safety and health standards, the National Electrical Code and local codes must be met and followed. Because we constantly strive to provide the finest material handling equipment, establishing industry standards, specifications must remain subject to change without notice.