

BUCKET ELEVATORS

G150 SERIES

TWIN TRUNK CASING, CENTRIFUGAL DISCHARGE ELEVATORS

Model	G150
Capacity - Free Flowing Material @ 110% Waterline Bucket Fill	14,100 BPH 17,500 ft ³ /hr 495.5 m ³ /hr
Short TPH @ 15 lbs/Ft. ³	132
MTPH @ 15 lbs/Ft. ³	120
Short TPH @ 18 lbs/Ft. ³	158
MTPH @ 18 lbs/Ft. ³	143
Short TPH @ 22 lbs/Ft. ³	193
MTPH @ 22 lbs/Ft. ³	175
Belt Speed FPM	335 (1.7m/s)
Head Shaft RPM	42
Bucket Spacing	10" (254mm) Staggered
Head Casing	7 Ga.
Head Shaft Bearings	Sealed Pillow Block Ball Bearing Optional Tapered Roller
Head Pulley	30" (762mm) Dia. w/ Vulcanized Rubber Lagging
Buckets	18" x 8" (457mm x 203mm) HDPE Double Row
Belting	38" (965mm) Wide PVC
Legging	12 Ga. Twin Leg Seam Welded Columns
Boot Casing	7 Ga.
Boot Shaft Bearings	Sealed Two Bolt Flange Ball Bearing
Boot Pulley	30" (762mm) Dia. Self-Cleaning Wing Pulley
Construction	Powder Coated Carbon, Galvanized, or Stainless Steel
Drive Package	Optional
Motor	Optional



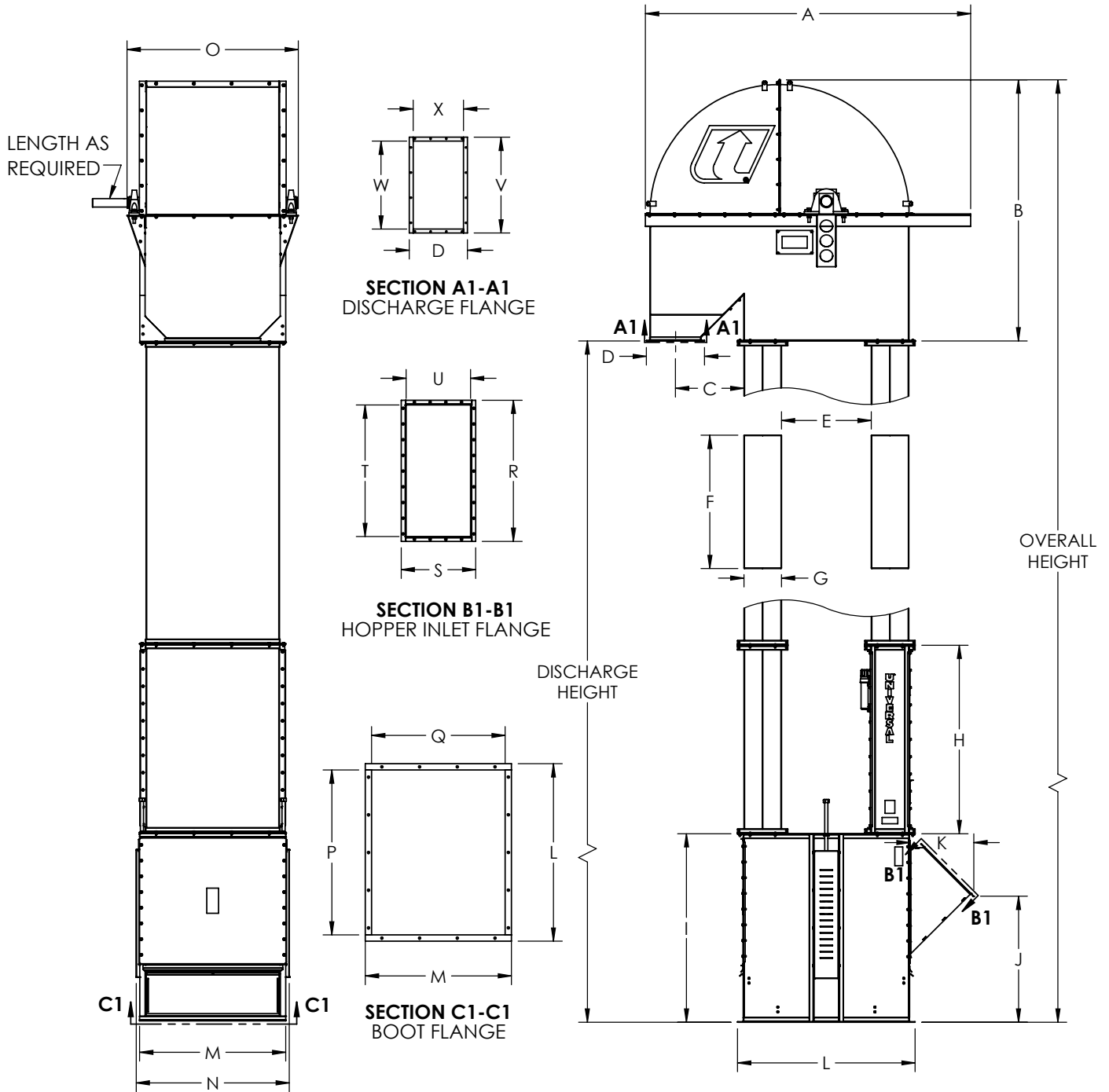
The head contour, pulley diameter, bucket size, and belt speed have been carefully selected to maximize capacity and minimize product damage. This elevator follows the guidelines of the American Peanut Sheller's Association, Inc. and the U.S. Department of Agriculture.

Available in powder coated carbon, stainless, or galvanized steel.

WHAT THE INDUSTRY IS BUILT AROUND

800.553.4446 | WWW.UNIVERSALINDUSTRIES.COM

BUCKET ELEVATORS | G150 SERIES



Unit	A	B	C	D	E	F	G	H	I	J	K	L	M	N	O	P	Q	R	S	T	U	V	W	X
in	103.5	83.1	21.8	18.5	28.6	42.4	11.9	60	60	40.1	20.3	56.5	46.5	48.7	54.5	52.5	44.5	42.9	23.8	41.9	20.5	30.5	28	16
mm	2629	2111	553	470	725	1078	303	1524	1524	1018	516	1435	1181	1237	1384	1334	1130	1091	603	1064	520	775	711	406



NOTE: Unit application, location and specifications determine the type, quantity and/or placement of electrical, electrical safety or other safety controls required. Whether these controls are supplied by Universal Industries or another supplier, all OSHA safety and health standards, the National Electrical Code and local codes must be met and followed. Because we constantly strive to provide the finest material handling equipment, establishing industry standards, specifications must remain subject to change without notice.