

SLIDER BED BELT CONVEYORS



UNIVEY[®] HOPPER BOTTOM CONVEYOR

DESIGNED TO MOVE SEED WITHOUT CROSS CONTAMINATION. THE LOW PROFILE, U-TROUGH DESIGN MAXIMIZES FILL, ENABLING IT TO MOVE HIGHER CAPACITIES.

Slider Bed Belt Conveyors are ideal for handling products that require gentle handling, such as seed or other bulk materials, food products, or chemicals/powders. Our wide variety of Slider Bed Conveyors reach a broad range of capacities and have various characteristics that make each conveyor's design uniquely perfect for handling specific bulk products.

Offered with industrial strength lining options that make them an ideal solution for shorter spans when space is a concern. The heavier construction and various options and accessories allow the Slider Bed Conveyors to handle harsher materials with ease.

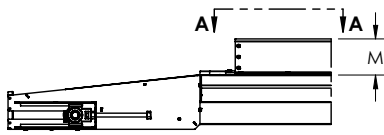
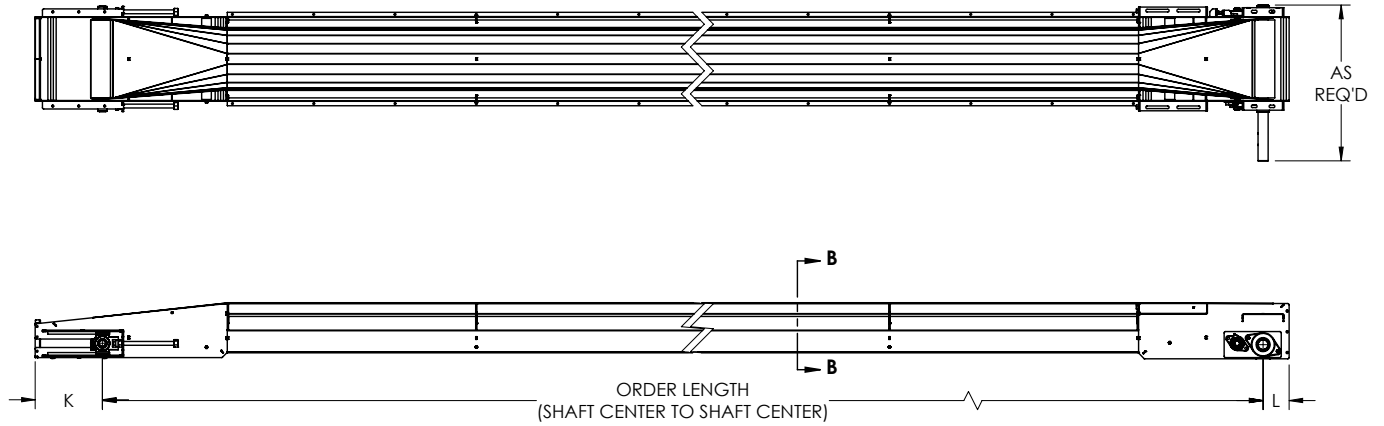


Model	HBC 15
Capacity @ 205 FPM	2,800 ft ³ /h (79.3 m ³ /h)
Capacity @ 435 FPM	5,900 ft ³ /h (167 m ³ /h)
Belt Width	15" (381mm)
Length (Minimum)	6' (1.8m) Center to Center
Length (Maximum)	140' (42.7m) Center to Center
Belt Speeds	90 - 435 FPM (0.46 - 2.21 m/s)
Head Shaft Bearings	Sealed Two Bolt Flange Ball Bearing
Head Pulley	4.5" (114.3mm) Dia. w/ Vulcanized Rubber Lagging
Tail Shaft Bearings	Sealed Take-up Ball Bearing
Tail Pulley	4.5" (114.3mm) Dia. Crowned Drum Pulley
Belt Take-up	9-1/4" (243.95mm)
Depth of Conveyor	6" (152.4mm)
Depth of Trough	9-3/4" (247.7mm)
Trough	14 Ga. Formed
Frame Construction	Powder Coated Carbon or Stainless Steel Available
Drive (Optional)	Shaft Mounted Reducer/V-Belt and Sheave Reduction
Optional Accessories	Bottom Covers, Bin Inlet, Adjustable Legs/Bin Hangers, 5° Upturn, Discharge Housings

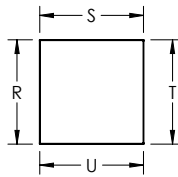
WHAT THE INDUSTRY IS BUILT AROUND

800.553.4446 | WWW.UNIVERSALINDUSTRIES.COM

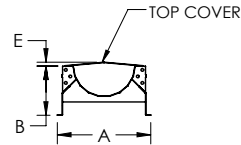
SLIDER BED BELT CONVEYORS | UNIVEY® HBC CONVEYOR



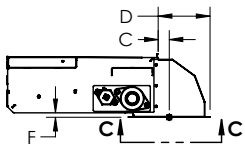
INLET HOPPER
(OPTIONAL)



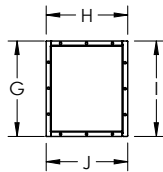
SECTION A-A
(INLET FLANGE)



SECTION B-B
THROUGH SECTION VIEW



90° DISCHARGE HOUSING



SECTION C-C
(DISCHARGE FLANGE)

MODEL	DIM	A	B	C	D	E	F	G	H	I	J	K	L	M	R	S	T	U
HBC 15	in	18	9.6	2	10	0.7	1	18.4	15.7	18.4	15.7	12.9	5	7	20.1	20.1	20.1	20.1
	mm	457	244	51	254	18	25	467	399	467	399	328	127	178	511	511	511	511



NOTE: Unit application, location and specifications determine the type, quantity and/or placement of electrical, electrical safety or other safety controls required. Whether these controls are supplied by Universal Industries or another supplier, all OSHA safety and health standards, the National Electrical Code and local codes must be met and followed. Because we constantly strive to provide the finest material handling equipment, establishing industry standards, specifications must remain subject to change without notice.