

# SLIDER BED BELT CONVEYORS

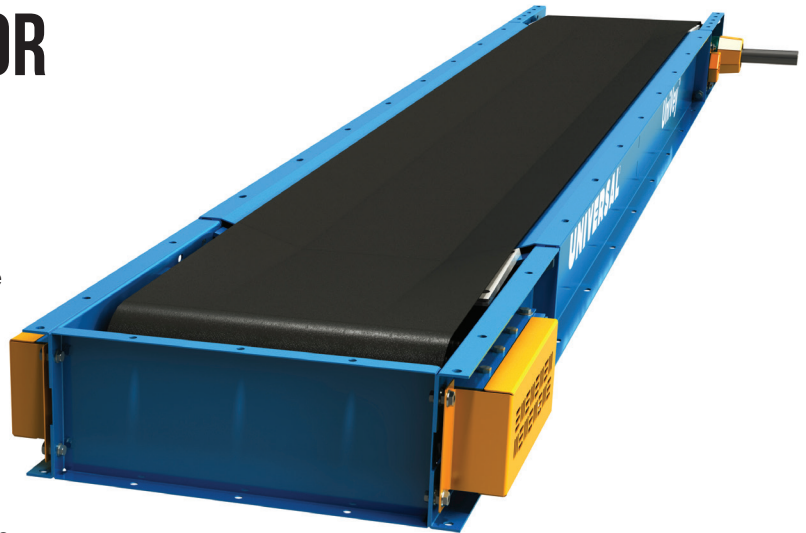


## UNIVEY® MPK CONVEYOR

**A COMPACT DESIGN REQUIRING MINIMUM SPACE, FOR EFFORTLESSLY CONVEYING A VARIETY OF MATERIALS.**

Slider Bed Belt Conveyors are ideal for handling products that require gentle handling, such as seed or other bulk materials, food products, or chemicals/powders. Our wide variety of Slider Bed Conveyors reach a broad range of capacities and have various characteristics that make each conveyor's design uniquely perfect for handling specific bulk products.

Offered with industrial strength lining options that make them an ideal solution for shorter spans when space is a concern. The heavier construction and various options and accessories allow the Slider Bed Conveyors to handle harsher materials with ease.

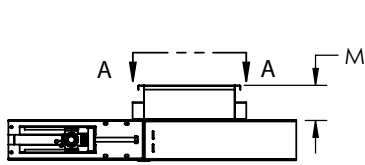
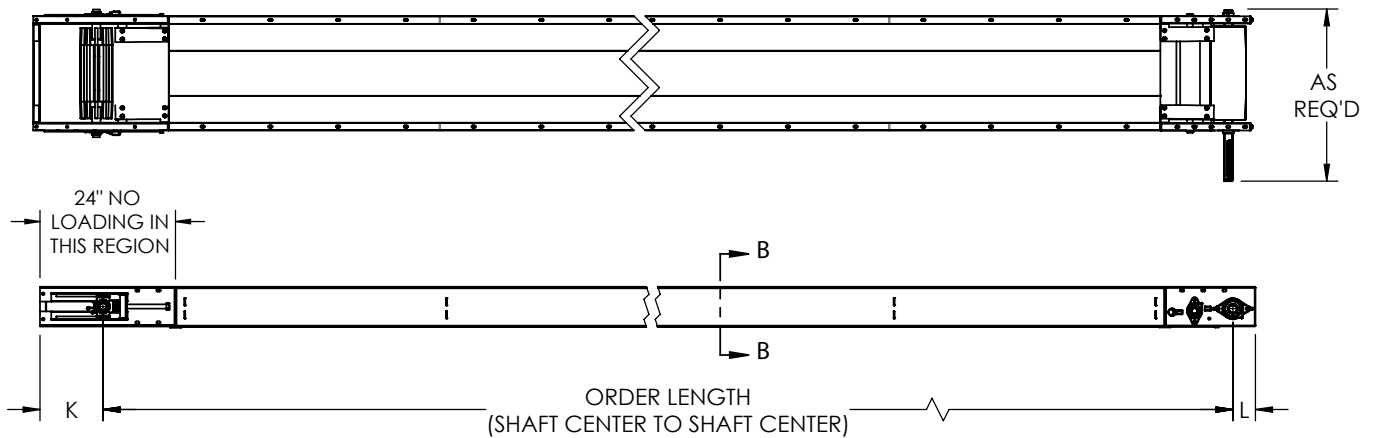


Model	MPK 12	MPK 16	MPK 24
Capacity @ 270 FPM	1,700 ft <sup>3</sup> /h (8.64 m <sup>3</sup> /h)	2,500 ft <sup>3</sup> /h (12.7 m <sup>3</sup> /h)	4,500 ft <sup>3</sup> /h (22.86 m <sup>3</sup> /h)
Belt Width	12" (304.8mm)	16" (406.4mm)	24" (609.6mm)
Length (Minimum)	2' (.61m) Center to Center		
Length (Maximum)	70' (21.3m) Center to Center		
Belt Speeds	28 - 270 FPM (0.14 - 1.37 m/s)		
Head Shaft Bearings	Sealed Two Bolt Flange Ball Bearing		
Head Pulley	6" (152.4mm) Dia. w/ Vulcanized Rubber Lagging		
Tail Shaft Bearings	Sealed Take-up Ball Bearing		
Tail Pulley	6" (152.4mm) Dia. Self Cleaning Wing Pulley		
Belt Take-up	8" (203.2mm)		
Depth of Conveyor	7-1/8" (180.98mm)		
Depth of Trough	1-1/2" (38.1mm)		
Trough	14 Ga.		
Frame Construction	Powder Coated Carbon or Stainless Steel		
Drive (Optional)	Shaft Mounted Reducer		
Optional Accessories	Discharge Housing, Weather Covers, Inlet Hopper, and Belt Cleaner		

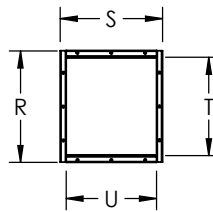
WHAT THE INDUSTRY IS BUILT AROUND

800.553.4446 | WWW.UNIVERSALINDUSTRIES.COM

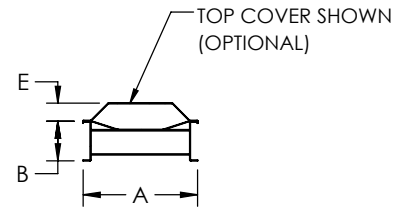
# SLIDER BED BELT CONVEYORS | UNIVEY® MPK CONVEYOR



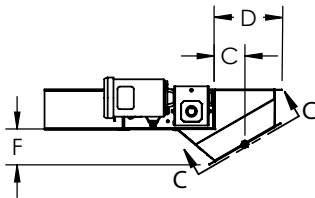
INLET HOPPER (OPTIONAL)



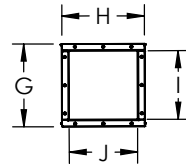
SECTION A-A (INLET FLANGE)



SECTION B-B (THROUGH SECTION VIEW)



30° DISCHARGE HOUSING (OPTIONAL)



SECTION C-C (DISCHARGE FLANGE)

MODEL	DIM	A	B	C	D	E	F	G	H	I	J	K	L	M	R	S	T	U
MPK 12	in	16.5	7.1	4.9	10.8	3.1	6.5	12.6	12.6	10.1	10.1	12	4	6.1	15.9	18.1	13.6	16
	mm	419	180	124	274	79	165	320	320	257	257	305	102	155	404	460	345	406
MPK 16	in	20.5	7.1	5.4	12	3.1	6.1	14.6	14.6	12.1	12.1	12	4	6.1	19.8	18.1	17.4	16
	mm	521	180	137	305	79	155	371	371	307	307	305	102	155	503	460	442	406
MPK 24	in	28.5	7.1	5.4	12	3.1	6.6	14.6	18.5	12.1	16	12	4	6.1	27.8	18.1	25.4	16
	mm	724	180	137	305	79	168	371	470	307	406	305	102	155	706	460	645	406



NOTE: Unit application, location and specifications determine the type, quantity and/or placement of electrical, electrical safety or other safety controls required. Whether these controls are supplied by Universal Industries or another supplier, all OSHA safety and health standards, the National Electrical Code and local codes must be met and followed. Because we constantly strive to provide the finest material handling equipment, establishing industry standards, specifications must remain subject to change without notice.