

BUCKET ELEVATORS

M TWIN TRUNK ALPHA SERIES

WITH EASY DUMP[®]

Model	M-10ED (EASY DUMP [®])	M-15	M-20	M-25
Capacity - Free Flowing Material @ 110% Waterline Bucket Fill	10,000 BPH 12,445 ft ³ /hr 352.4 m ³ /hr	15,000 BPH 18,668 ft ³ /hr 528.6 m ³ /hr	20,000 BPH 24,000 ft ³ /hr 679.6 m ³ /hr	25,000 BPH 30,000 ft ³ /hr 849.5 m ³ /hr
Short TPH @ 50 lbs/Ft. ³	330	495	600	750
MTPH @ 50 lbs/Ft. ³	299	449	544	680
Short TPH @ 75 lbs/Ft. ³	495	747	900	1124
MTPH @ 75 lbs/Ft. ³	449	677	816	1019
Belt Speed FPM	290 (1.47m/s)	424 (2.15m/s)	540 (2.74m/s)	706 (3.59m/s)
Head Shaft RPM	30	45	60	75
Bucket Spacing	11" (279.4mm) Staggered			
Head Casing	12 Ga. Hoods & 10 Ga. Lower Head			
Head Shaft Bearings	Sealed Pillow Block Ball Bearing Optional Tapered Roller			
Head Pulley	36" (914.4mm) Dia. w/ Vulcanized Rubber Lagging			
Buckets	18" x 8" (457.2mm x 203.2mm) HDPE or Steel Double Rows			
Belting	38" (965.2mm) Wide PVC or Woven Polyester			
Legging	12 Ga. Twin Leg Seam Welded Columns			
Boot Casing	1/4" (6.35mm) Plate w/ Heavy Corner Angles			
Boot Shaft Bearings	Sealed Take-up Ball Bearing			
Boot Pulley	36" diameter x 38" wide steel			
Construction	Powder Coated Carbon, Galvanized, or Stainless Steel			
Drive Package	Optional			
Motor	Optional			
Lining Options	AR Steel, Ceramic, or Urethane			

(EASY DUMP[®] speed, the speed suggested for gentle handling, is only guaranteed on the lowest capacity for each elevator).

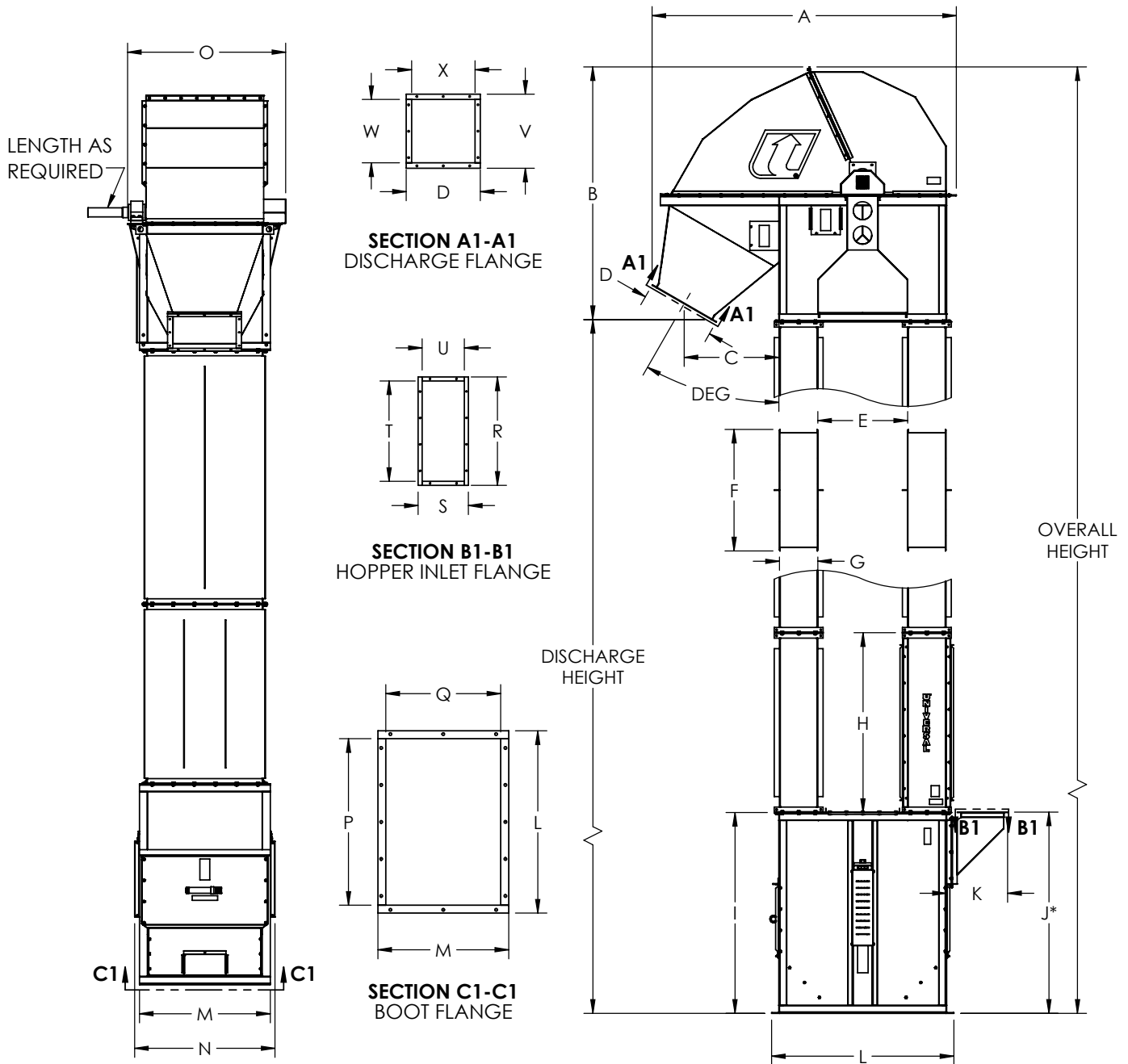


Alpha Series elevators are perfect for gently handling bulk products. Each elevator can reach a range of different capacities and speeds, and are available in powder coated carbon, stainless, or galvanized steel.

WHAT THE INDUSTRY IS BUILT AROUND

800.553.4446 | WWW.UNIVERSALINDUSTRIES.COM

BUCKET ELEVATORS | M TWIN TRUNK ALPHA SERIES



Unit	A	B	C	D	E	F	G	H	I	J	K	L	M	N	O	P	Q	R	S	T	U	V	W	X
in	115.2	95.7	35.8	28	34	46	14.5	68	76	76.1	23.2	69	49.5	53.1	59.8	63	43.5	41.0	19	38	16	28	24	24
mm	2925	2430	910	711	864	1168	368	1727	1930	1934	590	1753	1257	1349	1520	1600	1105	1041	483	965	406	711	610	610



NOTE: Unit application, location and specifications determine the type, quantity and/or placement of electrical, electrical safety or other safety controls required. Whether these controls are supplied by Universal Industries or another supplier, all OSHA safety and health standards, the National Electrical Code and local codes must be met and followed. Because we constantly strive to provide the finest material handling equipment, establishing industry standards, specifications must remain subject to change without notice.