

# BUCKET ELEVATORS

## SC SERIES

DESIGNED FOR IMPECCABLE SANITATION AND INSPECTION

Model	SC 6X4	SC 7X4
Capacity - Free Flowing Material @ 110% Waterline Bucket Fill	240 - 800 BPH 300 - 1,000 ft <sup>3</sup> /hr 8.5 - 28.3 m <sup>3</sup> /hr	320 - 1,000 BPH 400 - 1,300 ft <sup>3</sup> /hr 11.3 - 36.8 m <sup>3</sup> /hr
Short TPH @ 50 lbs/Ft. <sup>3</sup>	7 - 25	10 - 33
MTPH @ 50 lbs/Ft. <sup>3</sup>	7 - 26	9 - 30
Short TPH @ 75 lbs/Ft. <sup>3</sup>	11 - 38	15 - 50
MTPH @ 75 lbs/Ft. <sup>3</sup>	10 - 34	13 - 45
Belt Speed FPM	99 - 316 (0.51 - 1.6 m/s)	
Head Shaft RPM	69 - 230	
Bucket Spacing	4-1/4" (107.95mm) Center Spacing	5" (127mm) Center Spacing
Head Casing	14 Ga.	
Head Shaft Bearings	Sealed Pillow Block Ball Bearing	
Head Pulley	5½" (139.7mm) Dia. w/ Vulcanized Rubber Lagging	
Buckets	6" x 4" (152.4mm x 101.6mm)	7" x 4-1/2" (177.8mm x 114.3mm)
	HDPE, Optional Stainless Steel Available	
Belting	6-1/2" (165.1mm)	8" (203.2mm)
	Wide PVC or Rubber	
Legging	14 Ga. Single Leg Welded Column with Access Door	
Boot Casing	14 Ga.	
Boot Shaft Bearings	Sealed Four Bolt Flange Ball Bearing	
Boot Pulley	5½" (139.7mm) Dia. Self-Cleaning Spoke Pulley	
Construction	Powder Coated Carbon or Stainless Steel	
Drive Package	Optional	
Motor	Optional	
Lining Options	Consult Factory	

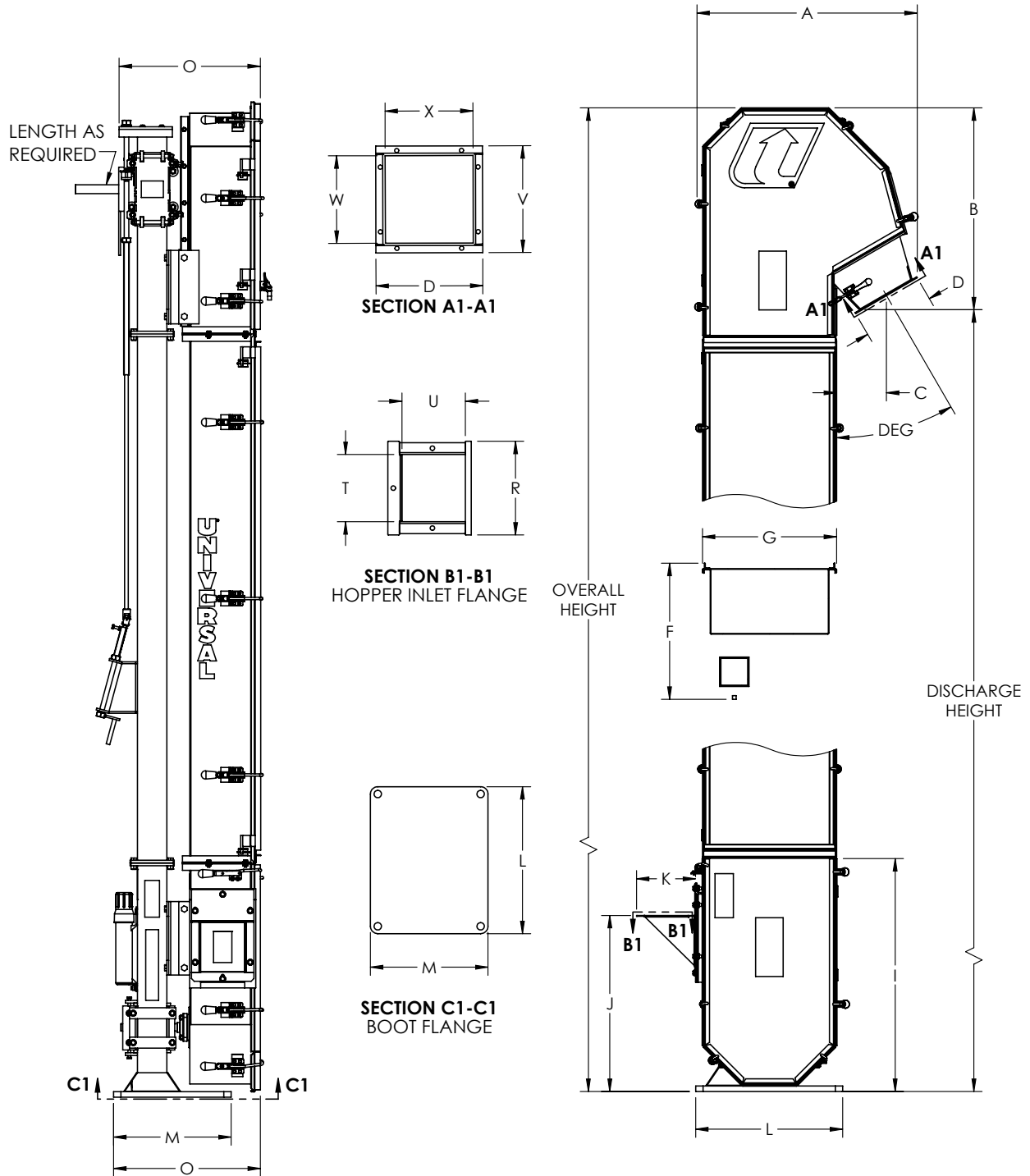


*The SC elevator is ideal for processing plants for food and other bulk solids and for processes that require impeccable sanitation and inspection. Offering total clean-out and inspection capabilities, the front side panels open quickly for inspection and for cleaning inside the casing, as well as belt removal.*

WHAT THE INDUSTRY IS BUILT AROUND

800.553.4446 | WWW.UNIVERSALINDUSTRIES.COM

# BUCKET ELEVATORS | SC SERIES



Unit	A	B	C	D	F	G	I	J	K	L	M	N	O	R	T	U	V	W	X
in	31.2	27.5	6.8	9.7	18.5	18.3	31.7	23.9	8.3	20	16	20	20	8.5	6.1	5.8	9.7	7.9	8
mm	793	698	172	246	470	464	805	608	211	508	406	507	507	216	155	146	246	202	202



NOTE: Unit application, location and specifications determine the type, quantity and/or placement of electrical, electrical safety or other safety controls required. Whether these controls are supplied by Universal Industries or another supplier, all OSHA safety and health standards, the National Electrical Code and local codes must be met and followed. Because we constantly strive to provide the finest material handling equipment, establishing industry standards, specifications must remain subject to change without notice.