



Since 1906...

# Universal<sup>®</sup> Industries

Universal Industries, Inc.

# RBC CONVEYOR



## Manual

**PART NUMBER: 76606**

Safety, Installation, Maintenance,  
Operation & Parts

Model: \_\_\_\_\_

S.N.: \_\_\_\_\_

Date: \_\_\_\_\_

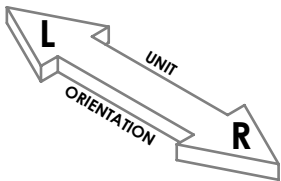
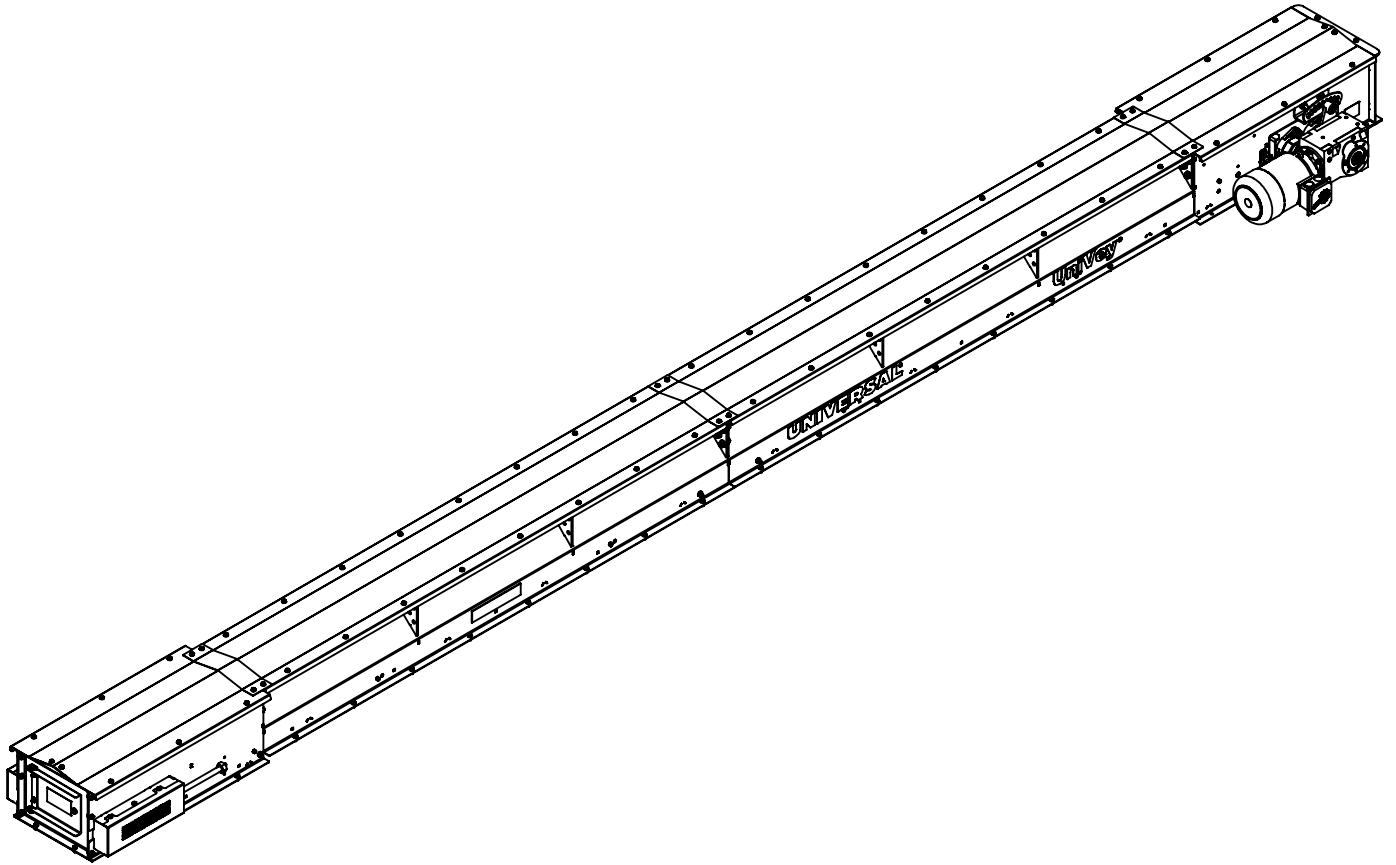
For Parts or Service Contact:

Universal Industries, Inc.

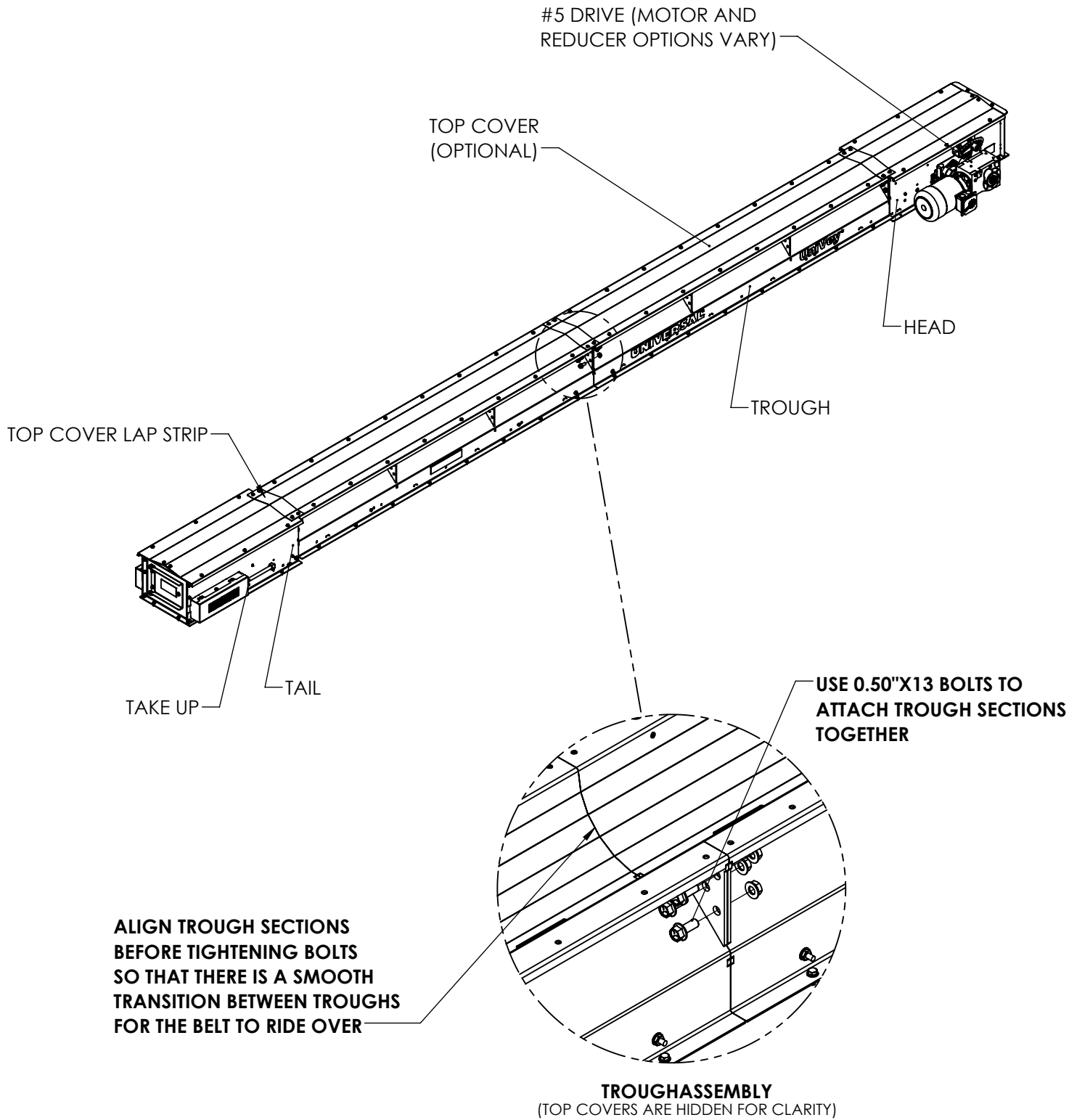
5800 Nordic Drive • P.O. Box 308 • Cedar Falls, IA 50613-0019

Phone: (319) 277-7501 • Fax: (319) 277-2318

# RBC ASSEMBLY



# UNIT ASSEMBLY

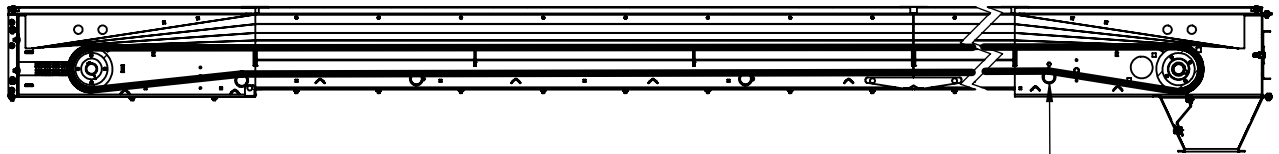
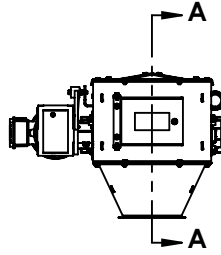


ASSEMBLY:

1. TROUGHS ARE TO BE INSTALLED SO THAT EVERY OTHER TROUGH HAS A CROSS OVER DECAL INSTALLED ON IT.

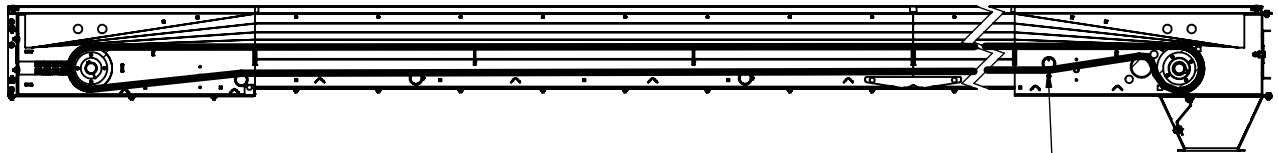
# BELT INSTALLATION

BELT FORMULA:	12" BELT - $C/C * 2 + 28"$
	18" BELT - $C/C * 2 + 28"$
	24" BELT - $C/C * 2 + 28"$
TROUGH FORMULA:	12" BELT - $C/C - 48"$
	18" BELT - $C/C - 60"$
	24" BELT - $C/C - 72"$



**BELT WITH NO SNUB PULLEY (<30')**

ROLLER SHOULD  
BE INSTALLED IN  
LOWER HOLE



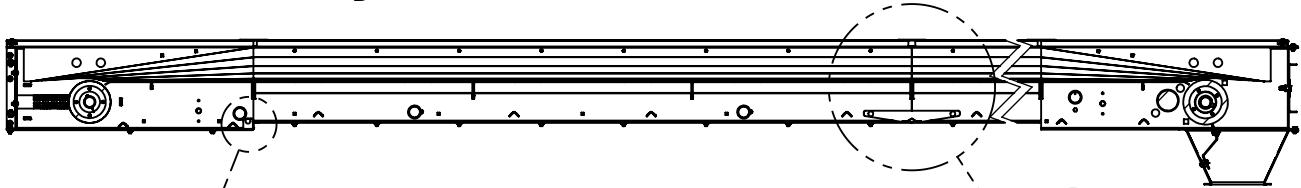
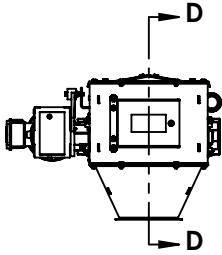
**BELT WITH SNUB PULLEY (>30')**

ROLLER SHOULD  
BE INSTALLED IN  
UPPER HOLE

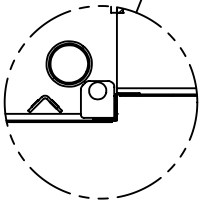
## ASSEMBLY:

1. THE TAKE-UP SHOULD BE TIGHTENED JUST ENOUGH SO THAT THE BELT DOES NOT SLIP AROUND THE HEAD PULLEY WHILE FULLY LOADED. (A SMALL AMOUNT OF SAG IN THE BELT IN-BETWEEN RETURN ROLLERS IS NORMAL)  
-ON SHORTER UNITS WITH NO SNUB, IF TRACKING BECOMES AN ISSUE, THE BELT MAY NEED TO BE TIGHTENED SLIGHTLY SO THAT IT WILL FORM AROUND THE CROWN OF THE HEAD PULLEY.

# COVER INSTALLATION (OPTIONAL ACCESSORY)

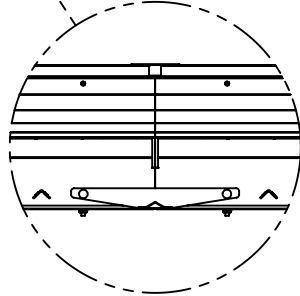


SECTION D-D



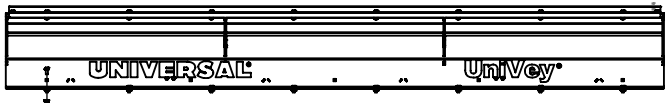
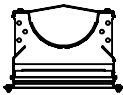
**HEAD/TAIL LAP STRIP**

LAP STRIP BOLTS IN TO SEAL VERTICAL SECTION OF THE BOTTOM COVERS.



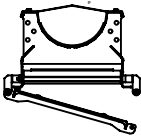
**LAPSTRIP**

LAP STRIP SHOULD BE BOLTED INTO EACH TROUGH SECTION SO THAT THE BOTTOM OF THE LAP STRIP IS FLUSH WITH THE BOTTOM OF THE TROUGH. BOTTOM COVERS CAN THEN BE MOUNTED AS SPECIFIED FOR THE TYPE OF COVER ORDERED.



**BOLT ON BOTTOM COVERS**

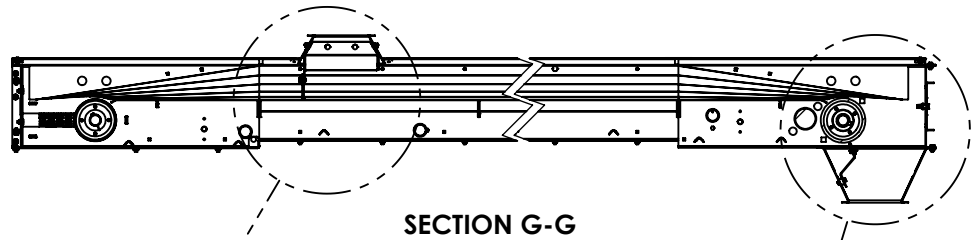
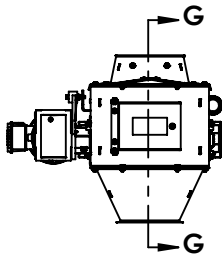
BOLT ON COVERS WITH CROSS BROKE POINT FACING UP SO THAT MATERIAL WILL NOT BUILD UP IN THE BOTTOM COVERS.



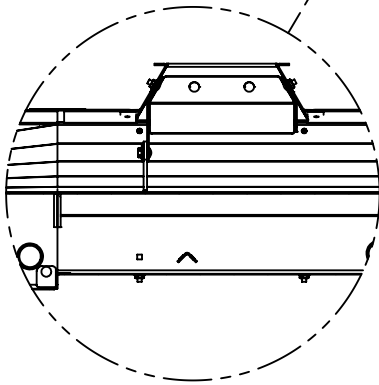
**HINGED BOTTOM COVERS**

HINGES SHOULD BE BOLTED ONTO THE SIDE OF THE CONVEYOR AND LEFT LOOSE. BOLT THE COVER TO THE HINGES. LIFT UP ON THE COVER AT EACH HINGE UNTIL THE COVER SEALS TIGHTLY TO THE BOTTOM OF THE CONVEYOR, THEN TIGHTEN THE HINGE BOLT.

# INLET/DISCHARGE INSTALLATION (OPTIONAL ACCESSORY)

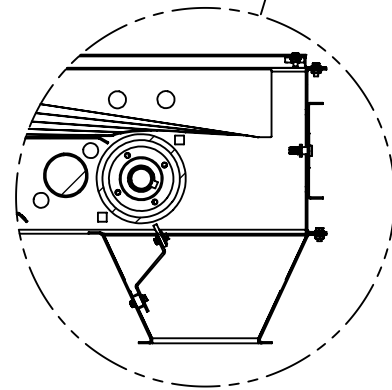


SECTION G-G



**HOPPER**

LOCATE HOPPER PLACEMENT, CUT HOPPER COVER TO THE CORRECT LENGTH SO THAT IT ENDS 1/2" FROM THE NEXT TROUGH SECTION. SAVE THE PIECE OF COVER THAT WAS CUT TO BE USED TO COVER THE TROUGH PRECEDING THE HOPPER. LAP STRIPS ARE INCLUDED WITH EACH COVER TO SEAL ANY GAPS BETWEEN COVERS. DROP THE HOPPER INTO THE HOPPER TROUGH AND SECURE WITH BOLTS. (ON THE TAIL INLET, ADJUST THE BACK SKIRT SO THAT IT JUST TOUCHES THE BELT, DO NOT PUSH DOWN ON THE BELT.)



**DISCHARGE**

DISCHARGE BOLTS DIRECTLY TO THE BOTTOM OF THE HEAD FRAME. ONCE THE DISCHARGE IS INSTALLED, THE BELT SCRAPER CAN BE ADJUSTED SO THAT IT JUST TOUCHES THE BELT. (DO NOT PUSH DOWN ON THE BELT.)