

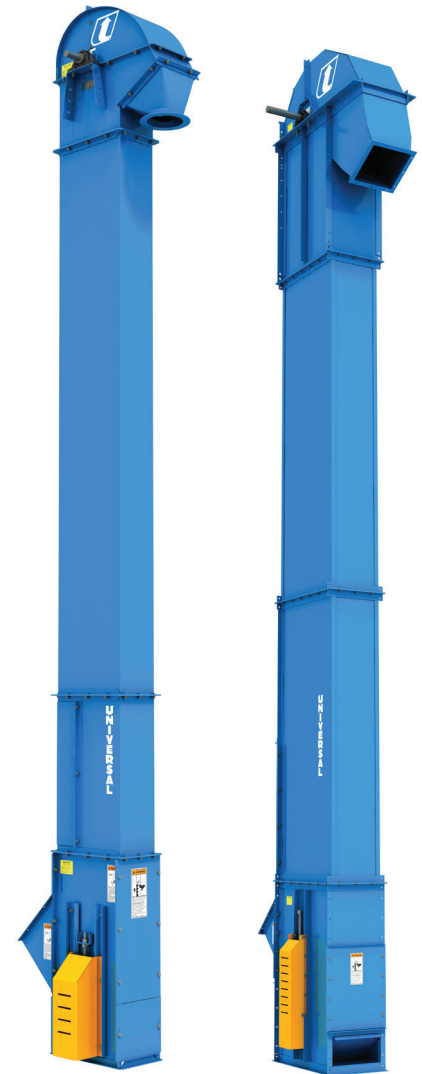
BUCKET ELEVATORS

U CHAIN SERIES

CHAIN OFFERING IN SINGLE TRUNK CASING WITH EASY DUMP[®]

Model	U1C-187ED (EASY DUMP [®])	U2C-600ED (EASY DUMP [®])	U3C-1600ED (EASY DUMP [®])
Capacity - Free Flowing Material @ 110% Waterline Bucket Fill	150 BPH 187 ft ³ /hr 51.3 m ³ /hr	560 BPH 700 ft ³ /hr 21.2 m ³ /hr	960 BPH 1,200 ft ³ /hr 45.3 m ³ /hr
Short TPH @ 50 lbs/Ft. ³	4	19	40
MTPH @ 50 lbs/Ft. ³	4	17	36
Short TPH @ 75 lbs/Ft. ³	7	28	60
MTPH @ 75 lbs/Ft. ³	6	26	54
Chain Speed FPM	130 (0.66m/s)	179 (0.91m/s)	179 (0.91m/s)
Head Shaft RPM	95	90	57
Bucket Spacing	5" (127mm) Center Spacing	5-7/32" (132.6mm) Center Spacing	7-13/16" (198.4mm) Center Spacing
Head Casing	12 Ga.	14 Ga. Hoods & 11 Ga. Lower Head	12 Ga. Hoods & 7 Ga. Lower Head
Head Shaft Bearings	Sealed Pillow Block Ball Bearing		
Head Sprocket	50A27	78A9HT	78A14HT
Buckets	6" x 4" HDPE (152.4mm x 101.6mm)	7" x 4½" HDPE (177.8mm x 114.3mm)	11" x 5½" HDPE (279.4mm x 139.7mm)
Chain	C2050	81X	
Legging (Seam Welded Single Leg)	14 Ga.	14 Ga. w/ Angle Iron Corners	12 Ga. w/ Angle Iron Corners
Boot Casing	12 Ga.	10 Ga.	7 Ga.
Boot Shaft Bearings	Sealed Two Bolt Flange Ball Bearing	Sealed Take-up Ball Bearing	
Boot Sprocket	50A27	78A9HT	78A14HT
Construction	Powder Coated Carbon, Galvanized, or Stainless Steel		
Motor	Optional		
Lining Options	AR Steel or Urethane		

(EASY DUMP[®] speed, the speed suggested for gentle handling, is only guaranteed on the lowest capacity for each elevator).

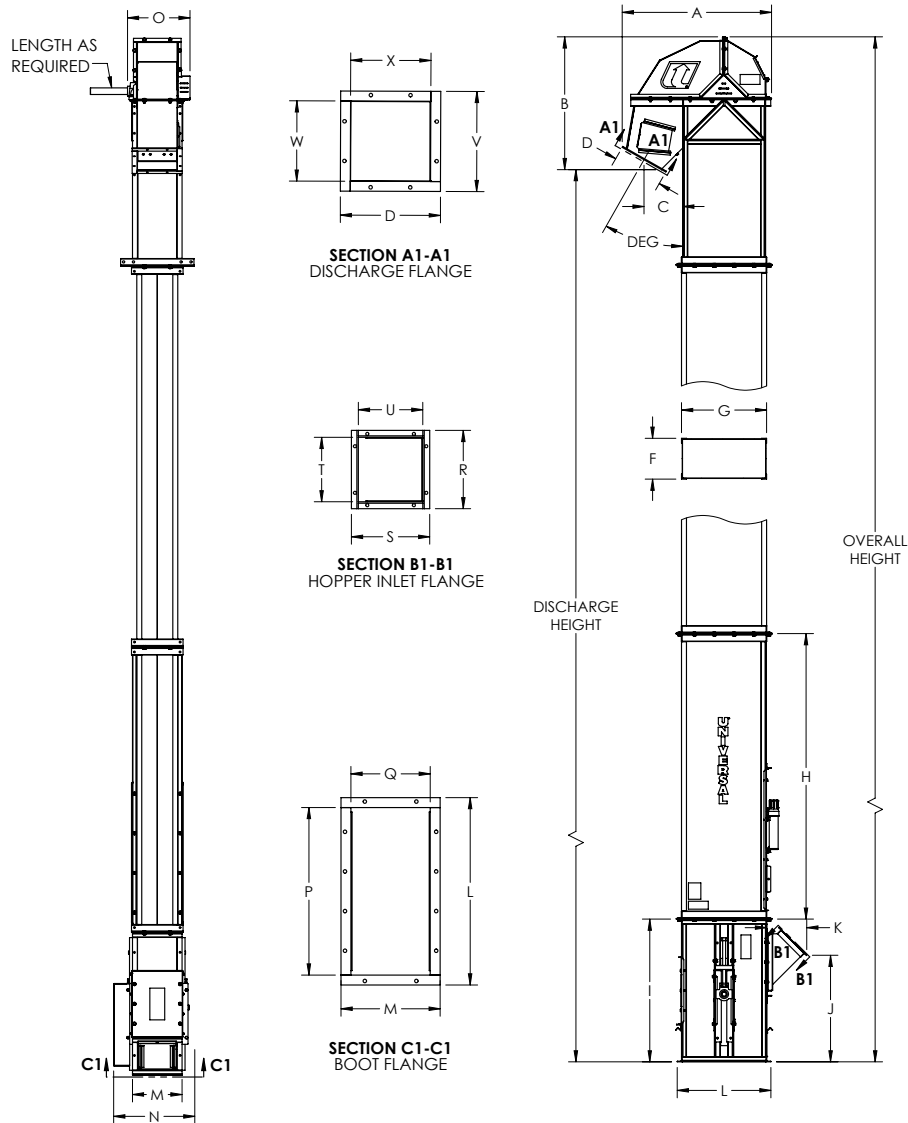


Single trunk casing built with thicker steel to handle corrosive, abrasive and hostile materials. When the elevator experiences extreme temperatures and/or additional harsh material characteristics, Universal Industries, Inc.[®] offers chain instead of belt for various U Series Elevators.

WHAT THE INDUSTRY IS BUILT AROUND

800.553.4446 | WWW.UNIVERSALINDUSTRIES.COM

BUCKET ELEVATORS | U CHAIN SERIES



U1C

Unit	A	B	C	D	F	G	H	I	J	K	L	M	N	O	P	Q	R	S	T	U	W	X
in	27	23.4	6.7	8.6*	8.1	15.1	26.4	33.5	17.8	8.7	17.1	10.1	16.9	13.8	15.1	8.3	10	-	7.9	8.1	6.1*	-
mm	686	595	169	219*	205	383	672	851	452	221	435	257	430	351	384	212	254	-	202	206	156*	-

*Round Discharge Flange

U2C

Unit	A	B	C	D	F	G	H	I	J	K	L	M	N	O	P	Q	R	S	T	U	V	W	X
in	37.6	33.5	9.8	12.6	10.3	21.5	72	36	26.9	10.2	23.6	12.5	20.5	15.8	21.1	8.1	9.9	-	8.1	8.1	12.6	10.1	10.1
mm	956	850	248	321	262	545	1829	914	683	258	600	318	520	400	537	206	251	-	206	206	321	257	257

U3C

Unit	A	B	C	D	F	G	H	I	J	K	L	M	N	O	P	Q	R	S	T	U	V	W	X
in	52.4	46.6	15.4	14.6	14.8	28.8	78	48	33.1	12.9	31.1	17.5	33.3	22.6	28.5	14.5	14.6	14.6	12.1	12.1	14.6	12.1	12.1
mm	1331	1184	391	371	376	732	1981	1219	840	327	789	445	845	573	724	368	371	371	308	308	371	308	308



NOTE: Unit application, location and specifications determine the type, quantity and/or placement of electrical, electrical safety or other safety controls required. Whether these controls are supplied by Universal Industries or another supplier, all OSHA safety and health standards, the National Electrical Code and local codes must be met and followed. Because we constantly strive to provide the finest material handling equipment, establishing industry standards, specifications must remain subject to change without notice.