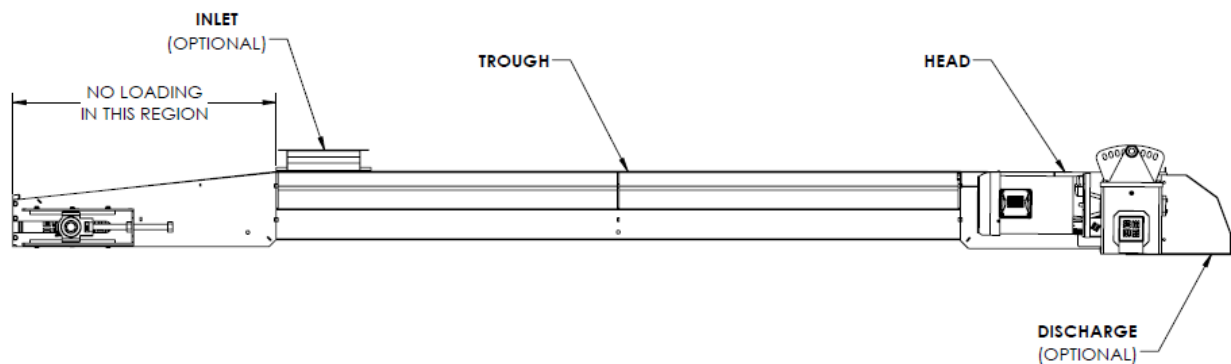


SLIDER BED BELT CONVEYORS

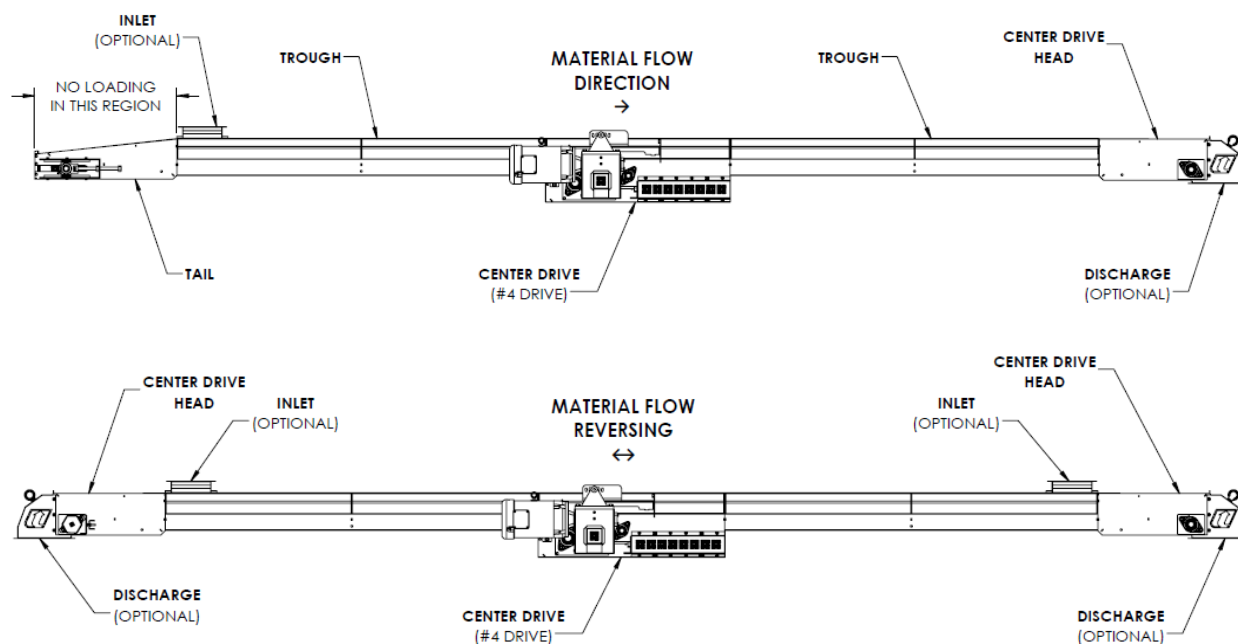
UNIVEY[®] HOPPER BOTTOM CONVEYOR (HBC)

3D MODEL DESIGN TEMPLATE

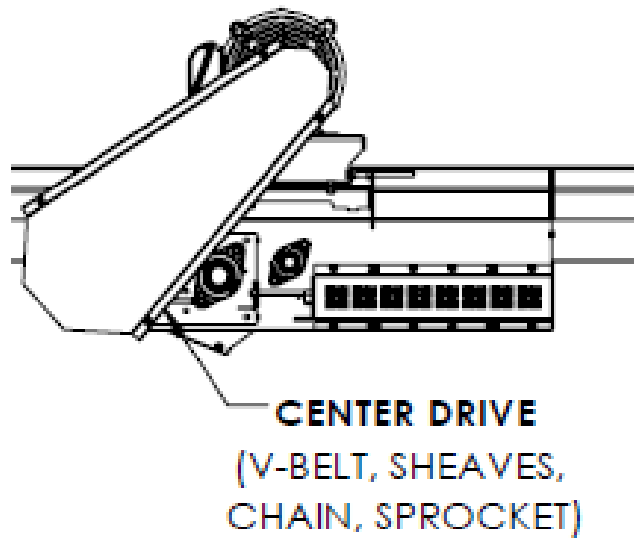
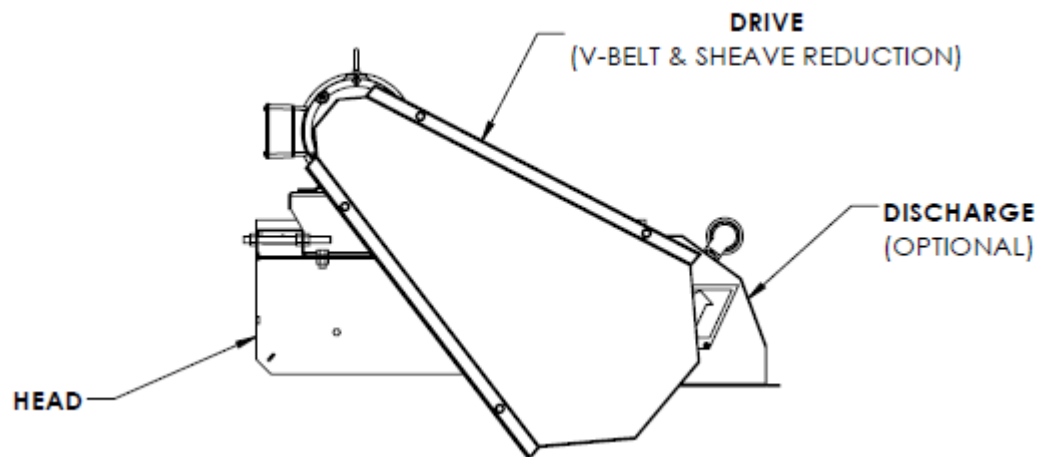


Center Drive

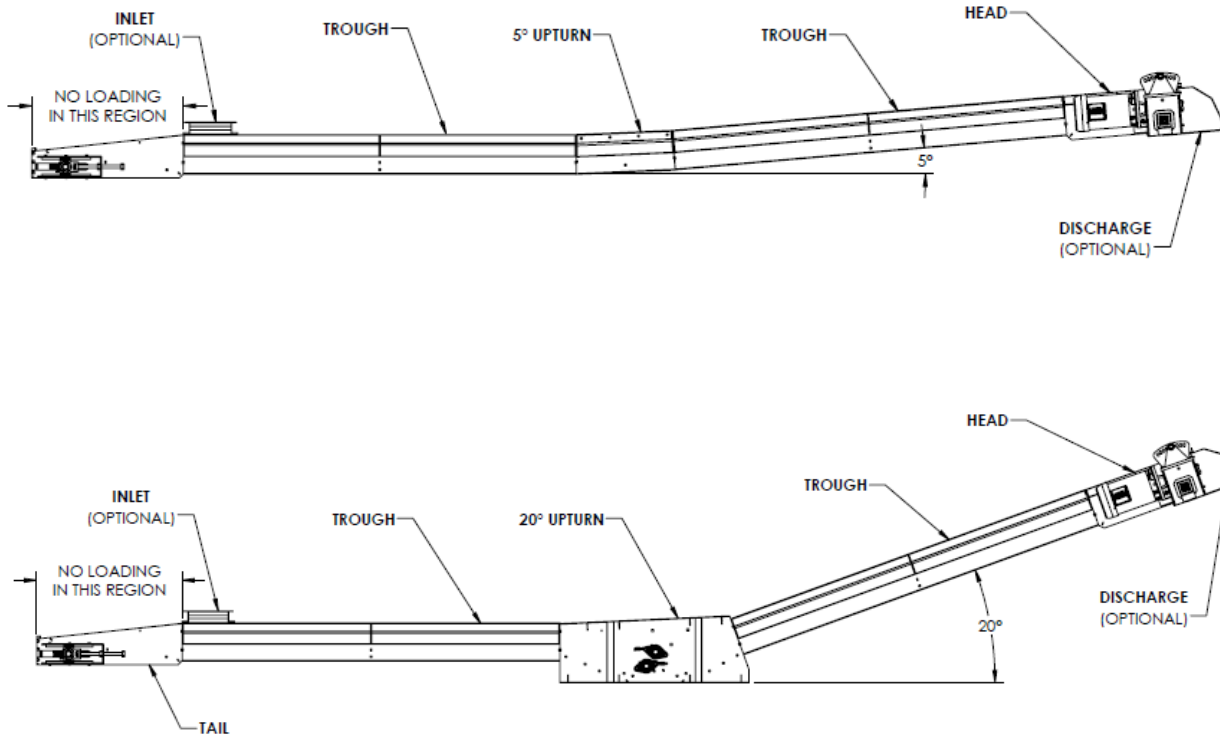
(shown with #4 Drive)



V-Belt Drive option also available



Upturns

**Notes:**

Available belt widths: 15"

Order length: Tail Shaft Center to Head Shaft Center

Trough formula: HBC15 Order length – 4'

Minimum length: HBC15 6' (C/C)

Max length: Consult Factory

Center Drive required on lengths greater than 65' or reversing.

For additional details refer to specification page on company website or link below:

www.universalindustries.com/download/HBC_Conveyor.pdf

NOTE: Unit application, location and specifications determine the type, quantity and/or placement of electrical, electrical safety or other safety controls required. Whether these controls are supplied by Universal Industries or another supplier, all OSHA safety and health standards, the National Electrical Code and local codes must be met and followed. Because we constantly strive to provide the finest material handling equipment, establishing industry standards, specifications must remain subject to change without notice.