

### **AUTOMATED, EFFICIENT, EFFECTIVE, SAFE, THOROUGH ELEVATOR BOOT CLEANOUT BETWEEN LOTS**



Boot side cut out for illustrative purposes.

Electrical control box supplied by others.

Guards Removed for photos only

- Improved product integrity
- Reduced cross contamination
- New partner processing IP and GM crops
- Lowered labor costs – Faster cleanout
- PLC controllable for hands-free cleanout
- Hinged door for easier inspection, faster accessibility, better sealing (removable for easy maintenance)
- Sizes for all Universal Bucket Elevators
- NEW UNITS or FIELD RETROFIT

#### **1. PRIMARY COMPRESSED AIR JETS**

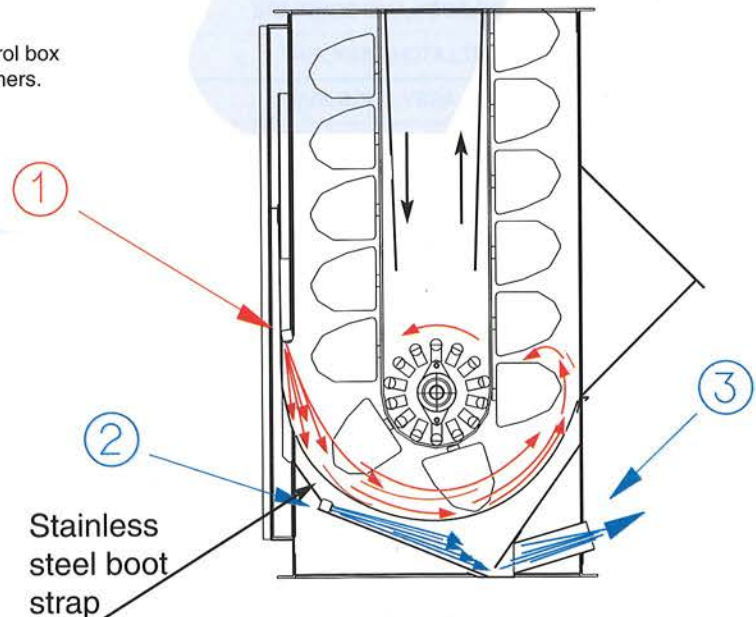
At the end of a run cycle, jet air stream gently, efficiently, thoroughly sweeps the remaining product along the stainless steel boot strap and into the buckets to be discharged.

#### **2. SECONDARY COMPRESSED AIR JETS**

Air flow below the stainless steel strap drives the dust particles (bee's wings or chaff) into the vacuum port. Not required on B3, C3, U and U1.

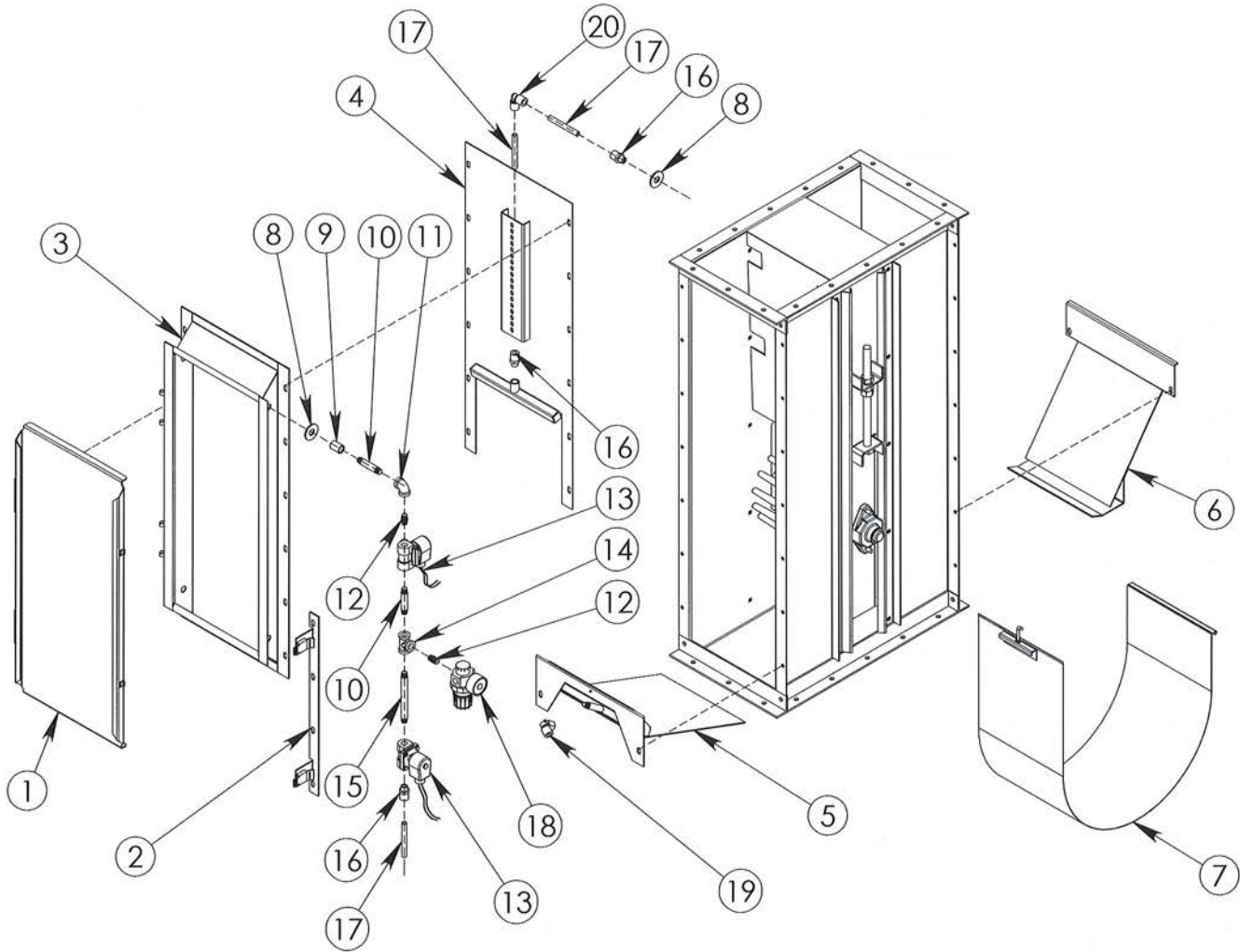
#### **3. VACUUM PORT**

Vacuum teams with forced air for virtually total boot clean-out.



## **THE TRADITION OF EXCELLENCE CONTINUES!**

# AIR VAC



INDEX NO.	DESCRIPTION	INDEX NO.	DESCRIPTION
1	DOOR,ASSY,AVC,COMPLETE	11	FITTING,ELBOW,0.375,GALV
2	MOUNT,LATCH,ASSY,AVC	12	FITTING,NIPPLE,0.375X1.00,GALV
3	FRAME,ASSY,DOOR,AVC	13	SOLENOID-ALCON,0.375PIP,AC/DC
4	PANEL,ASSY,MANIFOLD,AVC	14	FITTING,TEE,0.375,GALV
5	WEDGE,ASSY,DL,AVC	15	FITTING,NIPPLE,0.375X6.00,GALV
6	WEDGE,ASSY,UL,AVC	16	FITTING,0.500"ODX0.375,STRAIGHT
7	STRAP,ASSY,CLEANOUT,SS	17	TUBE,NYLON,0.500"NAT
8	WASHER,FLAT,0.625	18	REGULATOR,AIR,0.375",W/GUAGE
9	FITTING,COUPLING,0.375,GALV	19	FITTING,0.5"ODX0.375,FEMALE-ELBOW
10	FITTING,NIPPLE,0.375X3.00,GALV	20	FITTING,0.5"OD,UNION-ELBOW

NOTE: MODELS B3/U AND C3/U1 REQUIRE LESS PLUMBING COMPONENTS THAN SHOWN. CONSULT FACTORY WITH MODEL OF ELEVATOR FOR RETROFIT PRICING.

NOTE: Unit application, location and specifications determine the type, quantity and/or placement of electrical safety or other safety controls required. Whether these controls are supplied by Universal Industries or another supplier, all OSHA safety and health standards, the National Electrical Code and local codes must be met and followed. Because we constantly strive to provide the finest material handling equipment, establishing industry standards, specifications must remain subject to change without notice.

 **Universal Industries**  
 Universal Industries, Inc.  
 5800 Nordic Drive • PO Box 308 • Cedar Falls, IA 50613-0308  
 1-800-553-4446 • 319-277-7501 • FAX 319-277-2318



www.universalindustries.com • E-mail: sales@universalindustries.com

Printed in U.S.A. © Copyright 2002

